

RECYCLING COLLECTION SCHEDULE

May 2020 - April 2021

Place paper, container and glass recycling out by:



7:00 am

Recycling Collection Questions?

GFL Environmental is Recycle BC's curbside collection partner in Vancouver. They can answer questions about collection zones, missed pick-ups, holiday schedules, or recycling containers.

Contact GFL Environmental
Phone: 604-282-7966
Email: srrecycle@gflenv.com

For information on City of Vancouver garbage or green bin collection services, please phone 3-1-1 or visit vancouver.ca.

MAY 2020							JUNE 2020							JULY 2020							AUGUST 2020						
SUN	MON	TUE	WED	THU	FRI	SAT	SUN	MON	TUE	WED	THU	FRI	SAT	SUN	MON	TUE	WED	THU	FRI	SAT	SUN	MON	TUE	WED	THU	FRI	SAT
					1	2		1	2	3	4	5	6			1	2	3	4							1	
3	4	5	6	7	8	9	7	8	9	10	11	12	13	5	6	7	8	9	10	11	2	3	4	5	6	7	8
10	11	12	13	14	15	16	14	15	16	17	18	19	20	12	13	14	15	16	17	18	9	10	11	12	13	14	15
17	18	19	20	21	22	23	21	22	23	24	25	26	27	19	20	21	22	23	24	25	16	17	18	19	20	21	22
²⁴ / ₃₁	25	26	27	28	29	30	28	29	30	26	27	28	29	30	31	²⁹ / ₃₀	³⁰ / ₃₁	25	26	27	28	29					

SEPTEMBER 2020							OCTOBER 2020							NOVEMBER 2020							DECEMBER 2020							
SUN	MON	TUE	WED	THU	FRI	SAT	SUN	MON	TUE	WED	THU	FRI	SAT	SUN	MON	TUE	WED	THU	FRI	SAT	SUN	MON	TUE	WED	THU	FRI	SAT	
			1	2	3	4	5				1	2	3	1	2	3	4	5	6	7				1	2	3	4	5
6	7	8	9	10	11	12	4	5	6	7	8	9	10	8	9	10	11	12	13	14	6	7	8	9	10	11	12	
13	14	15	16	17	18	19	11	12	13	14	15	16	17	15	16	17	18	19	20	21	13	14	15	16	17	18	19	
20	21	22	23	24	25	26	18	19	20	21	22	23	24	22	23	24	25	26	27	28	20	21	22	23	24	25	26	
27	28	29	30	25	26	27	28	29	30	31	29	30	27	28	29	30	31											

JANUARY 2021							FEBRUARY 2021							MARCH 2021							APRIL 2021						
SUN	MON	TUE	WED	THU	FRI	SAT	SUN	MON	TUE	WED	THU	FRI	SAT	SUN	MON	TUE	WED	THU	FRI	SAT	SUN	MON	TUE	WED	THU	FRI	SAT
					1	2		1	2	3	4	5	6		1	2	3	4	5	6					1	2	3
3	4	5	6	7	8	9	7	8	9	10	11	12	13	7	8	9	10	11	12	13	4	5	6	7	8	9	10
10	11	12	13	14	15	16	14	15	16	17	18	19	20	14	15	16	17	18	19	20	11	12	13	14	15	16	17
17	18	19	20	21	22	23	21	22	23	24	25	26	27	21	22	23	24	25	26	27	18	19	20	21	22	23	24
²⁴ / ₃₁	25	26	27	28	29	30	28	28	29	30	31	25	26	27	28	29	30										

ENSURE MORE MATERIALS ARE RECYCLED AND KEPT OUT OF LANDFILL BY REMEMBERING THESE PRO-TIPS:

- 1 Line it up.** Put your yellow bag between your recycling containers and not on top of them. Keep 1m (3ft) between your recycling containers and your garbage/green bin.
- 2 Keep it clean.** Empty and rinse all containers.
- 3 Flatten and cut.** If your cardboard is too large for your yellow bag, flatten and cut it down to smaller pieces. 30" x 30" (76cm x 76cm) or smaller. Stack them between recycling containers. Remember to keep plastic wrap out of your recycling!
- 4 Connect with us.** Download our app, email us at info@recyclebc.ca, or connect with us on social media.



RECYCLEBC™

Making a difference together.

2020-2021 RECYCLING SCHEDULE

City of Vancouver



RecycleBC.ca

Download the App

View your collection schedule, sign up for recycling reminders, see depot locations, and search materials.



RecycleBC.ca/App

Please find a detailed material list at RecycleBC.ca/what-can-i-recycle.
請瀏覽 RecycleBC.ca/what-can-i-recycle 查詢物料清單中文版。
ਕਿਰਪਾ ਕਰਕੇ ਇਕ ਅਨੁਵਾਦਿਤ ਸਮੱਗਰੀ ਸੂਚੀ ਨੂੰ ਇਥੋਂ ਦੇਖੋ RecycleBC.ca/what-can-i-recycle.
번역 된 자료 목록은 RecycleBC.ca/what-can-i-recycle 에서 찾으십시오.

RECYCLING COLLECTION QUESTIONS?

GFL Environmental is Recycle BC's curbside collection partner in Vancouver. They can answer questions about collection zones, missed pick-ups, holiday schedules, or recycling containers.

Contact: GFL Environmental
Phone: 604-282-7966
Email: srrecycle@gflenv.com

NEARBY DEPOTS

London Drugs (all Vancouver locations)
*London Drugs accepts plastic bags and overwrap, foam packaging, and other flexible plastic packaging only. Due to space limitations, a maximum of one grocery bag of each material is suggested per visit.

Vancouver Central Return-It Depot
2639 Kingsway Street, Vancouver
604-434-0707

Powell Street Return-It Bottle Depot
1856 Powell Street, Vancouver
604-253-4987

Vancouver Zero Waste Centre
8588 Yukon Street, Vancouver
604-873-7000 or 3-1-1

South Van Bottle Depot
34 East 69th Avenue, Vancouver
604-325-3370

Find your nearest depot location at:
RecycleBC.ca/Depots

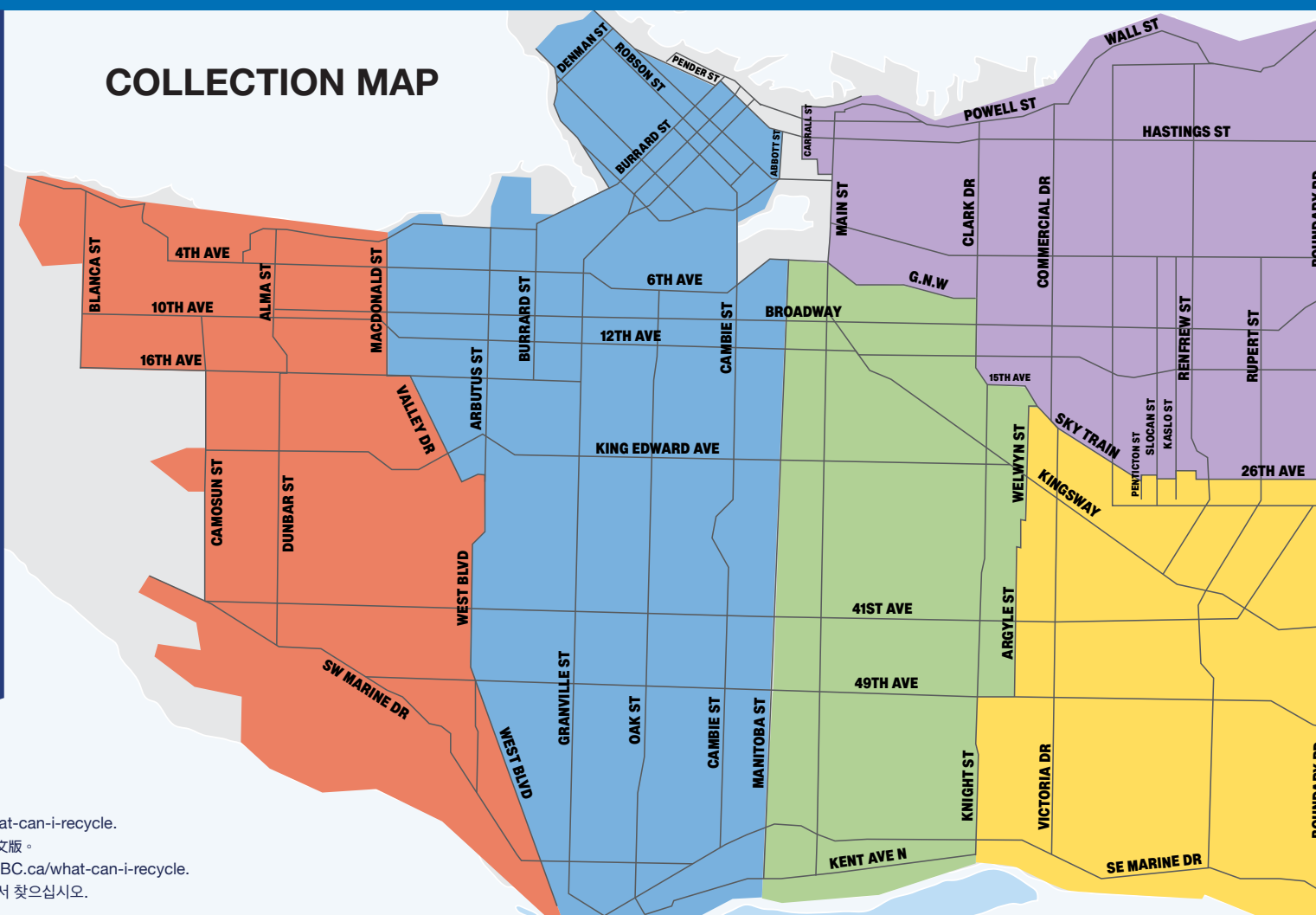
ABOUT RECYCLE BC

Recycle BC is a not-for-profit organization responsible for residential packaging and paper recycling throughout BC, servicing over 1.8 million households. Recycle BC ensures your household materials are picked up, sorted, and responsibly recycled. Our program is funded by over 1,200 businesses that include retailers, manufacturers and restaurants that supply packaging and paper to BC residents, shifting costs away from homeowners.

For more information visit:

RecycleBC.ca

[Facebook](https://www.facebook.com/RecycleBC) [Instagram](https://www.instagram.com/RecycleBC) [TikTok](https://www.tiktok.com/@RecycleBC) @RecycleBC



PAPER

PUT INTO REUSABLE RECYCLING BAG

Recycle at curbside or depot
Clean and dry paper only



CONTAINERS

PUT INTO BLUE BOX

Recycle at curbside or depot
Empty and rinse containers



GLASS

PUT INTO GREY BOX

Recycle at curbside or depot
Empty and rinse glass bottles and jars



DROP-OFF ONLY

TAKE TO RECYCLING DEPOT

Not accepted in your yellow bag,
blue box, or grey box



Newspapers, inserts, flyers



Magazines, catalogues, phone books



Boxboard boxes



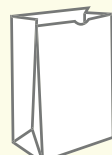
Moulded paper



Household paper



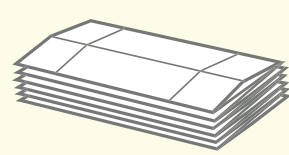
Envelopes



Paper bags



Shredded paper (contain in paper bag or box first)



Cardboard boxes

- ✓ Greeting cards
- ✓ Paper gift wrap
- ✓ Paper gift bags

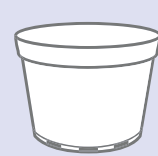
- ✓ Paper carry-out beverage trays
- ✓ Cores from paper towel and toilet paper



Plastic bottles, jars and jugs



Plastic trays and clamshells



Plastic garden pots and seedling trays



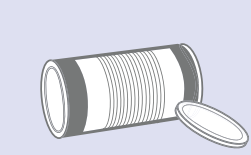
Caps, tops, lids and pumps



Plastic or paper take-out cups, bowls and lids



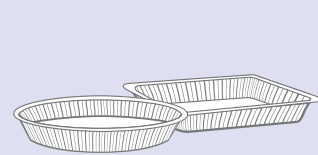
Cartons for soup, milk, etc.



Metal cans



Aerosol cans (empty)



Foil wrap and take out containers

- ✓ Plastic packaging for toys, batteries etc. Separate plastic from paper backing
- ✓ Spiral wound cans and lids for frozen juice concentrate, chips, etc.

- ✓ Plastic pails less than 25L for laundry detergent, cat litter, etc.
- ✓ Plastic tubs for yogurt, margarine, etc.



Glass bottles - clear and coloured



Glass jars - clear and coloured

! Put all lids in blue box.

NOT ACCEPTED

Do NOT place into Grey Box

- ✗ Drinking glasses, dishes, cookware
- ✗ Window glass, mirrors
- ✗ Ceramic products
- ✗ Light bulbs or light fixtures

Want to recycle something not included here?

Search Recycle BC's Waste Wizard or download a full material list at RecycleBC.ca.
To recycle items that are not packaging or paper, contact the Recycling Council of BC (RCBC) at 604-732-9253 or visit RCBC.ca.

Unused Medication

Empty medication containers can be recycled with Recycle BC, but unused or expired medications can be safely disposed by returning them to your community pharmacies. For more information or to find the nearest pharmacy please visit www.healthsteward.ca

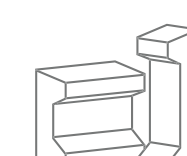
FOAM PACKAGING (return to depot)



Foam meat trays (remove absorbent pad)



Foam take-out containers and cups



Foam cushion packaging used to protect electronics etc.

- ✗ Blue or pink foam insulation, packing chips and peanuts
- ✗ Squishy or flexible foam, foam noodles

PLASTIC BAGS AND OVERWRAP (return to depot)



Plastic bags



Outer bags and product wraps

- ✓ Bags for groceries, produce, dry bulk foods, frozen vegetables, water softener, salt, garden products, newspapers, etc.
- ✓ Overwrap for diapers, feminine hygiene products, paper towels, soft drink flats

NOT ACCEPTED

Do NOT place into Yellow Bag



Hard and soft cover books



Plastic bags and overwrap



Clothing and textiles



Food, yard waste and wood

- ✗ Non-paper gift wrap, foil wrap, cards or paper with glitter
- ✗ Rubber bands, ribbons, bows
- ✗ Padded envelopes
- ✗ Bags and boxes with foil liners
- ✗ Paper towels, napkins and tissues
- ✗ Foil or plastic lined paper bags

NO HAZARDOUS MATERIALS

Exclude batteries; medical sharps; bleach or aerosol containers with any contents remaining; compressed gas cylinders, for example used propane cylinders; containers for paint, motor oil, vehicle lubricants, or antifreeze; or containers for pesticides with the words DANGER, WARNING, or POISON, and precautionary octagon or diamond symbols with skull and cross bones.

NOT ACCEPTED

Do NOT place into Blue Box



Plastic bags and overwrap



Hazardous waste



Glass



Electronics and appliances



Toys and games



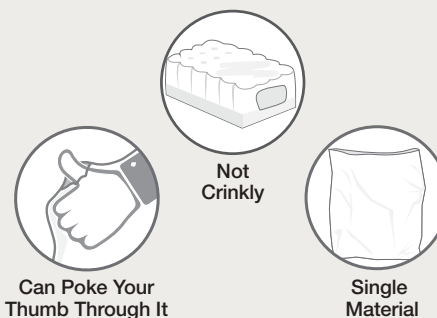
Hangers, pots, pans and other scrap metal

- ✗ Foam packaging
- ✗ Chip or foil bags, candy wrappers
- ✗ Stand-up pouches
- ✗ Packaging labeled biodegradable or compostable

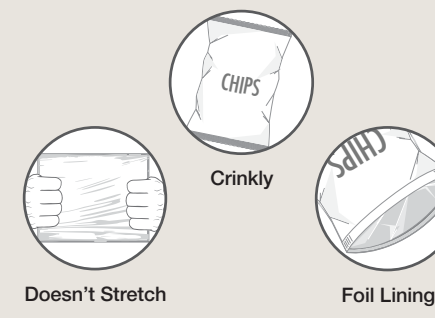
- ✗ Wiring, metal cords, hardware
- ✗ Clothing, textiles and shoes
- ✗ Food and yard waste

Characteristics of Plastic Bags and Overwrap vs. Other Flexible Plastic Packaging

PLASTIC BAGS AND OVERWRAP



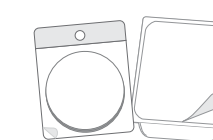
OTHER FLEXIBLE PLASTIC PACKAGING



OTHER FLEXIBLE PLASTIC PACKAGING (return to depot)



Crinkly wrappers and bags



Flexible packaging with plastic seal



Zipper lock and stand-up pouches



Woven plastic bags



Non-food protective packaging

- ✗ Plastic squeeze tubes, plastic-lined paper, paper-lined plastic, plastic strapping
- ✗ 6-pack rings, biodegradable plastic, vinyl

For more information, visit RecycleBC.ca/FlexiblePackaging