

RECYCLING COLLECTION SCHEDULE

July 2020 - June 2021

Place paper, container and glass (December 2020) recycling at curb by



8:00 am

JULY 2020

SUN	MON	TUE	WED	THU	FRI	SAT
			1	2	3	4
5	6	7	8	9	10	11
12	13	14	15	16	17	18
19	20	21	22	23	24	25
26	27	28	29	30	31	

AUGUST 2020

SUN	MON	TUE	WED	THU	FRI	SAT
						1
2	3	4	5	6	7	8
9	10	11	12	13	14	15
16	17	18	19	20	21	22
23	24	25	26	27	28	29

SEPTEMBER 2020

SUN	MON	TUE	WED	THU	FRI	SAT
		1	2	3	4	5
6	7	8	9	10	11	12
13	14	15	16	17	18	19
20	21	22	23	24	25	26
27	28	29	30			

OCTOBER 2020

SUN	MON	TUE	WED	THU	FRI	SAT
					1	2
3	4	5	6	7	8	9
10	11	12	13	14	15	16
17	18	19	20	21	22	23
24	25	26	27	28	29	30

NOVEMBER 2020

SUN	MON	TUE	WED	THU	FRI	SAT
1	2	3	4	5	6	7
8	9	10	11	12	13	14
15	16	17	18	19	20	21
22	23	24	25	26	27	28
29	30					

DECEMBER 2020

SUN	MON	TUE	WED	THU	FRI	SAT
		1	2	3	4	5
6	7	8	9	10	11	12
13	14	15	16	17	18	19
20	21	22	23	24	25	26
27	28	29	30	31		

JANUARY 2021

SUN	MON	TUE	WED	THU	FRI	SAT
					1	2
3	4	5	6	7	8	9
10	11	12	13	14	15	16
17	18	19	20	21	22	23
24	25	26	27	28	29	30

FEBRUARY 2021

SUN	MON	TUE	WED	THU	FRI	SAT
	1	2	3	4	5	6
7	8	9	10	11	12	13
14	15	16	17	18	19	20
21	22	23	24	25	26	27
28						

MARCH 2021

SUN	MON	TUE	WED	THU	FRI	SAT
	1	2	3	4	5	6
7	8	9	10	11	12	13
14	15	16	17	18	19	20
21	22	23	24	25	26	27
28	29	30	31			

APRIL 2021

SUN	MON	TUE	WED	THU	FRI	SAT
					1	2
3	4	5	6	7	8	9
10	11	12	13	14	15	16
17	18	19	20	21	22	23
24	25	26	27	28	29	30

MAY 2021

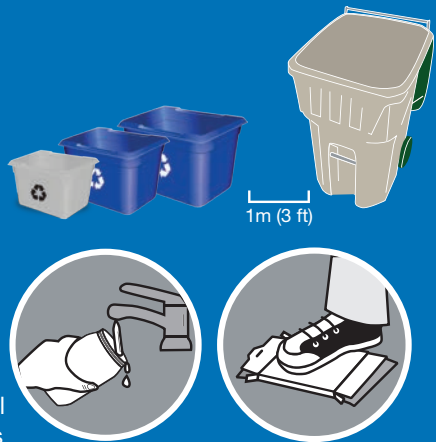
SUN	MON	TUE	WED	THU	FRI	SAT
						1
2	3	4	5	6	7	8
9	10	11	12	13	14	15
16	17	18	19	20	21	22
23	24	25	26	27	28	29

JUNE 2021

SUN	MON	TUE	WED	THU	FRI	SAT
		1	2	3	4	5
6	7	8	9	10	11	12
13	14	15	16	17	18	19
20	21	22	23	24	25	26
27	28	29	30			

ENSURE MORE MATERIALS ARE RECYCLED AND KEPT OUT OF LANDFILL BY REMEMBERING THESE PRO-TIPS:

- 1 **Line it up.** Put your recycling boxes beside each other. Keep 1m (3ft) between your recycling containers and your garbage/green bin.
- 2 **Keep it clean.** Empty and rinse all containers.
- 3 **Flatten and cut.** If your cardboard is too large for your blue box, flatten and cut it down to smaller pieces. 30" x 30" (76cm x 76cm) or smaller. Stack them between recycling containers. Remember to keep plastic wrap out of your recycling!
- 4 **Connect with us.** Download our app, email us at [info@recyclebc.ca](mailto:info@recyclebc.ca), or connect with us on social media @RecycleBC.



NEW FOR 2020-2021!

NEW GLASS COLLECTION



RECYCLEBC™

Making a difference together.

2020-2021 RECYCLING SCHEDULE

City of Quesnel



Glass Coming December 2020

RecycleBC.ca

Download the App

View your collection schedule, sign up for recycling reminders, see depot locations, and search materials with the Recycle BC app.



RecycleBC.ca/App

Please find a detailed material list at [RecycleBC.ca/what-can-i-recycle](https://RecycleBC.ca/what-can-i-recycle).  
請瀏覽 [RecycleBC.ca/what-can-i-recycle](https://RecycleBC.ca/what-can-i-recycle) 查詢物料清單中文版。  
ਕਿਰਪਾ ਕਰਕੇ ਇਕ ਅਨੁਵਾਦਿਤ ਸਮੱਗਰੀ ਸੂਚੀ ਨੂੰ ਇਥੇ ਦੇਖੋ [RecycleBC.ca/what-can-i-recycle](https://RecycleBC.ca/what-can-i-recycle).  
번역 된 자료 목록은 [RecycleBC.ca/what-can-i-recycle](https://RecycleBC.ca/what-can-i-recycle) 에서 찾으십시오.

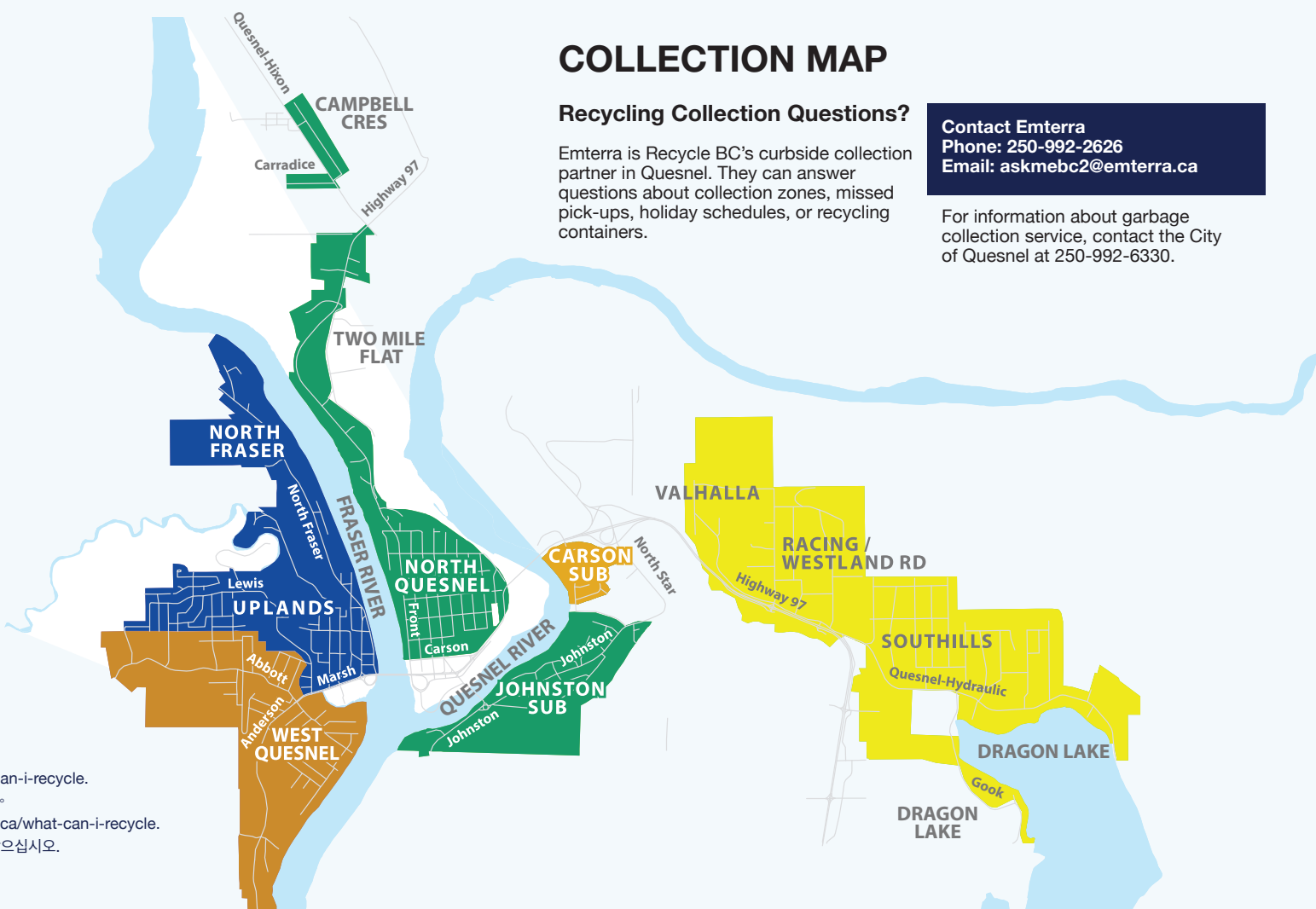
COLLECTION MAP

Recycling Collection Questions?

Emterra is Recycle BC's curbside collection partner in Quesnel. They can answer questions about collection zones, missed pick-ups, holiday schedules, or recycling containers.

Contact Emterra  
Phone: 250-992-2626  
Email: [askmebc2@emterra.ca](mailto:askmebc2@emterra.ca)

For information about garbage collection service, contact the City of Quesnel at 250-992-6330.



NEARBY DEPOT

**Quesnel Landfill**  
980 Carson Pit Road, Quesnel  
250-991-2749

**Baker Creek Transfer Station**  
4831 Nazko Rd, Quesnel  
250-392-3351

ABOUT RECYCLE BC

Recycle BC is a not-for-profit organization responsible for residential packaging and paper recycling throughout BC, servicing over 1.8 million households. Recycle BC ensures your household materials are picked up, sorted, and responsibly recycled. Our program is funded by over 1,200 businesses that include retailers, manufacturers and restaurants that supply packaging and paper to BC residents, shifting costs away from homeowners.

For more information visit:

RecycleBC.ca

@RecycleBC



# PAPER

PUT INTO SMALLER BLUE BOX

Recycle at curbside or depot  
Clean and dry paper only



# CONTAINERS

PUT INTO BLUE BOX

Recycle at curbside or depot  
Empty and rinse containers



# GLASS

PUT INTO GREY BOX

Take glass to a depot until your grey glass box arrives



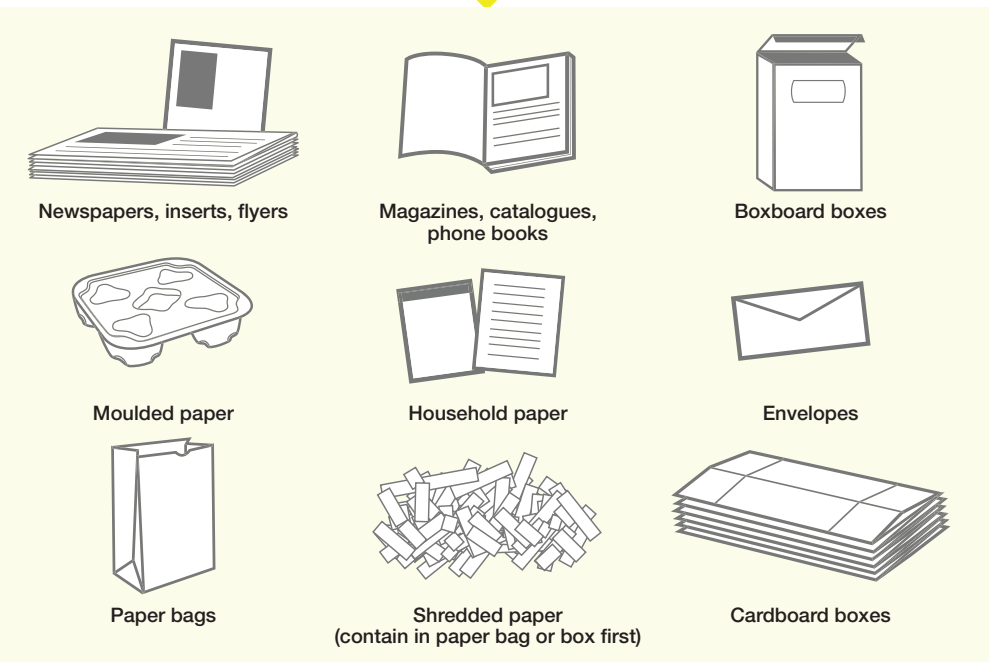
# DROP-OFF ONLY

TAKE TO RECYCLING DEPOT

Not accepted in your blue boxes or grey box



Coming December 2020



- ✓ Greeting cards
- ✓ Paper gift wrap
- ✓ Paper gift bags
- ✓ Paper carry-out beverage trays
- ✓ Cores from paper towel and toilet paper



- ✓ Plastic packaging for toys, batteries etc. Separate plastic from paper backing
- ✓ Plastic pails less than 25L for laundry detergent, cat litter, etc.
- ✓ Spiral wound cans and lids for frozen juice concentrate, chips, etc.
- ✓ Plastic tubs for yogurt, margarine, etc.



! Put all lids in blue box.

**NOT ACCEPTED**  
Do NOT place into Grey Box

- ✗ Drinking glasses, dishes, cookware
- ✗ Window glass, mirrors
- ✗ Ceramic products
- ✗ Light bulbs or light fixtures

**Want to recycle something not included here?**

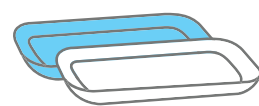
Search Recycle BC's Waste Wizard or download a full material list at [RecycleBC.ca](https://www.recyclebc.ca).

To recycle items that are not packaging or paper, contact the Recycling Council of BC (RCBC) at 1-800-667-4321 or visit [RCBC.ca](https://www.rcbc.ca).

**Unused Medication**

Empty medication containers can be recycled with Recycle BC, but unused or expired medications can be safely disposed by returning them to community pharmacies. For more information or to find the nearest pharmacy please visit [www.healthsteward.ca](https://www.healthsteward.ca).

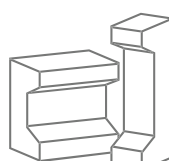
**FOAM PACKAGING** (return to depot)



Foam meat trays (remove absorbent pad)



Foam take-out containers and cups



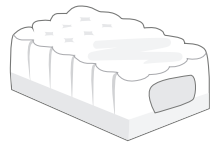
Foam cushion packaging used to protect electronics etc.

- ✗ Blue or pink foam insulation, packing chips and peanuts
- ✗ Squishy or flexible foam, foam noodles

**PLASTIC BAGS AND OVERWRAP** (return to depot)



Plastic bags



Outer bags and product wraps

- ✓ Bags for groceries, produce, dry bulk foods, frozen vegetables, water softener, salt, garden products, newspapers, etc.
- ✓ Overwrap for diapers, feminine hygiene products, paper towels, soft drink flats

**NOT ACCEPTED**

Do NOT place into smaller Blue Box



- ✗ Non-paper gift wrap, foil wrap, cards or paper with glitter
- ✗ Rubber bands, ribbons, bows
- ✗ Padded envelopes
- ✗ Bags and boxes with foil liners
- ✗ Paper towels, napkins and tissues
- ✗ Foil or plastic lined paper bags

**NO HAZARDOUS MATERIALS**

Exclude batteries; medical sharps; bleach or aerosol containers with any contents remaining; compressed gas cylinders, for example used propane cylinders; containers for paint, motor oil, vehicle lubricants, or antifreeze; or containers for pesticides with the words DANGER, WARNING, or POISON, and precautionary octagon or diamond symbols with skull and cross bones.

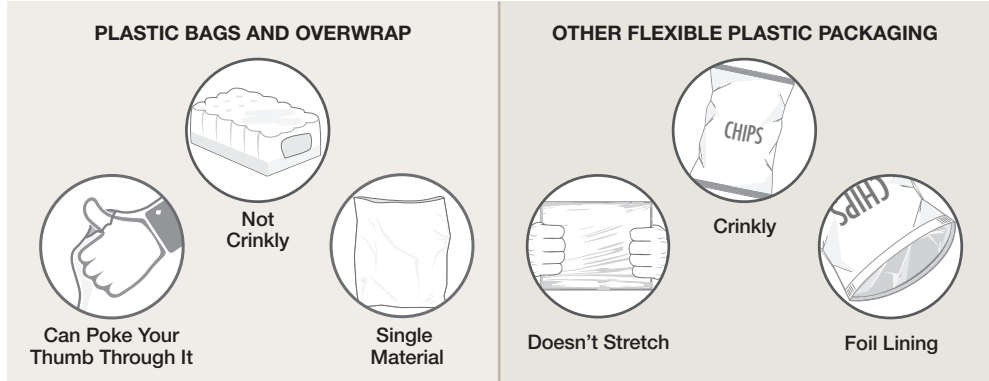
**NOT ACCEPTED**

Do NOT place into Blue Box



- ✗ Foam packaging
- ✗ Chip or foil bags, candy wrappers
- ✗ Stand-up pouches
- ✗ Packaging labeled biodegradable or compostable
- ✗ Wiring, metal cords, hardware
- ✗ Clothing, textiles and shoes
- ✗ Food and yard waste

**Characteristics of Plastic Bags and Overwrap vs. Other Flexible Plastic Packaging**

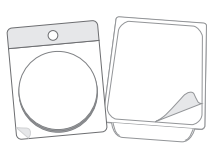


For more information, visit [RecycleBC.ca/FlexiblePackaging](https://www.recyclebc.ca/FlexiblePackaging)

**OTHER FLEXIBLE PLASTIC PACKAGING** (return to depot)



Crinkly wrappers and bags



Flexible packaging with plastic seal



Zipper lock and stand-up pouches



Woven plastic bags



Non-food protective packaging

- ✗ Plastic squeeze tubes, plastic-lined paper, paper-lined plastic, plastic strapping
- ✗ 6-pack rings, biodegradable plastic, vinyl