

RECYCLING COLLECTION SCHEDULE

July 2020 - June 2021

Place paper and container recycling at curb by:

7:00 am

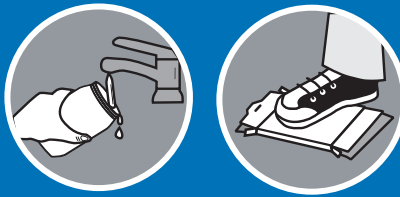
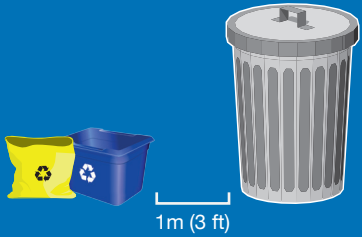


JULY 2020							AUGUST 2020							SEPTEMBER 2020						
SUN	MON	TUE	WED	THU	FRI	SAT	SUN	MON	TUE	WED	THU	FRI	SAT	SUN	MON	TUE	WED	THU	FRI	SAT
				1	2	3							1			1	2	3	4	5
5	6	7	8	9	10	11	2	3	4	5	6	7	8	6	7	8	9	10	11	12
12	13	14	15	16	17	18	9	10	11	12	13	14	15	13	14	15	16	17	18	19
19	20	21	22	23	24	25	16	17	18	19	20	21	22	20	21	22	23	24	25	26
26	27	28	29	30	31		23	24	25	26	27	28	29	27	28	29	30			
OCTOBER 2020							NOVEMBER 2020							DECEMBER 2020						
SUN	MON	TUE	WED	THU	FRI	SAT	SUN	MON	TUE	WED	THU	FRI	SAT	SUN	MON	TUE	WED	THU	FRI	SAT
				1	2	3	1	2	3	4	5	6	7			1	2	3	4	5
4	5	6	7	8	9	10	8	9	10	11	12	13	14	6	7	8	9	10	11	12
11	12	13	14	15	16	17	15	16	17	18	19	20	21	13	14	15	16	17	18	19
18	19	20	21	22	23	24	22	23	24	25	26	27	28	20	21	22	23	24	25	26
25	26	27	28	29	30	31	29	30						27	28	29	30	31		
JANUARY 2021							FEBRUARY 2021							MARCH 2021						
SUN	MON	TUE	WED	THU	FRI	SAT	SUN	MON	TUE	WED	THU	FRI	SAT	SUN	MON	TUE	WED	THU	FRI	SAT
						1		1	2	3	4	5	6		1	2	3	4	5	6
3	4	5	6	7	8	9	7	8	9	10	11	12	13	7	8	9	10	11	12	13
10	11	12	13	14	15	16	14	15	16	17	18	19	20	14	15	16	17	18	19	20
17	18	19	20	21	22	23	21	22	23	24	25	26	27	21	22	23	24	25	26	27
24	25	26	27	28	29	30	28							28	29	30	31			
APRIL 2021							MAY 2021							JUNE 2021						
SUN	MON	TUE	WED	THU	FRI	SAT	SUN	MON	TUE	WED	THU	FRI	SAT	SUN	MON	TUE	WED	THU	FRI	SAT
				1	2	3		2	3	4	5	6	7		6	7	8	9	10	11
4	5	6	7	8	9	10	9	10	11	12	13	14	15	13	14	15	16	17	18	19
11	12	13	14	15	16	17	16	17	18	19	20	21	22	20	21	22	23	24	25	26
18	19	20	21	22	23	24	23	24	25	26	27	28	29	27	28	29	30			
25	26	27	28	29	30															



ENSURE MORE MATERIALS ARE RECYCLED AND KEPT OUT OF LANDFILL BY REMEMBERING THESE PRO-TIPS:

- 1 Line it up.** Keep 1m (3ft) between your blue box and yellow bag and your garbage bin.
- 2 Keep it clean.** Empty and rinse all containers.
- 3 Flatten and cut.** If your cardboard is too large for your bag, flatten and cut it down to smaller pieces. 30" x 30" (76cm x 76cm) or smaller. Stack them next to your recycling bag. Remember to keep plastic wrap out of your recycling!
- 4 Connect with us.** Download our app, email us at [info@recyclebc.ca](mailto:info@recyclebc.ca), or connect with us on social media @RecycleBC.



RECYCLING COLLECTION QUESTIONS?

SCV Contractors is Recycle BC's curbside collection partner in Revelstoke. They can answer questions about collection zones, missed pick-ups, holiday schedules, or recycling containers.

Contact: SCV Contractors  
Phone: 1-888-887-2870  
Email: [admin@scvwaste.ca](mailto:admin@scvwaste.ca)



REVELSTOKE RECYCLING COLLECTION CHANGES

Starting July 1, please use the new blue box and yellow bag provided to set-out your recycling for collection. Place containers (plastic, metal and cartons) in the blue box and paper and cardboard in the yellow bag.



NEARBY DEPOTS

**Revelstoke Bottle Depot**  
97 Cartier Street, Revelstoke  
250-837-2693

**Revelstoke Landfill**  
330 Westside Road, Revelstoke  
250-832-8194

Download the App



View your collection schedule, sign up for recycling reminders, see depot locations, and search materials with the Recycle BC app.

[RecycleBC.ca/App](http://RecycleBC.ca/App)

ABOUT RECYCLE BC

Recycle BC is a not-for-profit organization responsible for residential packaging and paper recycling throughout BC, servicing over 1.8 million households. Recycle BC ensures your household materials are picked up, sorted, and responsibly recycled. Our program is funded by over 1,200 businesses that include retailers, manufacturers and restaurants that supply packaging and paper to BC residents, shifting costs away from homeowners.

For more information visit:

[RecycleBC.ca](http://RecycleBC.ca)  
[Facebook](https://www.facebook.com/RecycleBC) [Instagram](https://www.instagram.com/RecycleBC) [TikTok](https://www.tiktok.com/@RecycleBC) [YouTube](https://www.youtube.com/RecycleBC)



NEW FOR 2020!

RECYCLING CHANGES

SORTING REQUIREMENTS

NEW COLLECTION SCHEDULE



RECYCLEBC™

Making a difference together.

2020-2021  
RECYCLING SCHEDULE

City of Revelstoke



[RecycleBC.ca/Revelstoke](http://RecycleBC.ca/Revelstoke)

# PAPER

PUT INTO YELLOW BAG

Recycle at curbside or depot



# CONTAINERS

PUT INTO BLUE BOX

Recycle at curbside or depot



# DROP-OFF ONLY

TAKE TO RECYCLING DEPOT

Not accepted in your yellow bag or blue box



Newspapers, inserts, flyers



Magazines, catalogues, phone books



Boxboard boxes



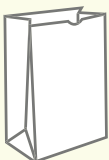
Moulded paper



Household paper



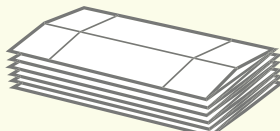
Envelopes



Paper bags



Shredded paper (contain in paper bag or box first)



Cardboard boxes

- ✓ Greeting cards
- ✓ Paper gift wrap
- ✓ Paper gift bags

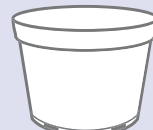
- ✓ Paper bags for pet food, flour, sugar, etc.
- ✓ Paper carry-out beverage trays
- ✓ Cores from paper towel and toilet tissue



Plastic bottles, jars and jugs



Plastic trays and clamshells



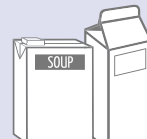
Plastic garden pots and seedling trays



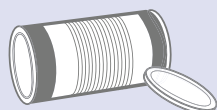
Caps, tops, lids and pumps



Plastic or paper take-out cups, bowls and lids



Cartons for soup, milk, etc.



Metal cans



Aerosol cans (empty)



Foil wrap and take out containers

- ✓ Plastic packaging for toys, batteries etc. Separate plastic from paper backing
- ✓ Spiral wound cans and lids for frozen juice concentrate, chips, etc.

- ✓ Plastic pails less than 25L laundry detergent, cat litter, etc.
- ✓ Plastic tubs for yogurt, margarine, etc.

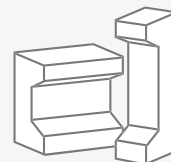
## FOAM PACKAGING (return to depot)



Foam meat trays (remove absorbent pad)



Foam take-out containers and cups



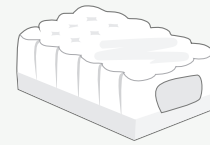
Foam cushion packaging used to protect electronics etc.

- ✗ Blue or pink foam insulation, packing chips and peanuts
- ✗ Squishy or flexible foam, foam noodles

## PLASTIC BAGS AND OVERWRAP (return to depot)



Plastic bags



Outer bags and product wraps

- ✓ Bags for groceries, produce, dry bulk foods, frozen vegetables, water softener, salt, garden products, newspapers, etc.
- ✓ Overwrap for diapers, feminine hygiene products, paper towels, soft drink flats

## GLASS (return to depot)



Glass bottles and jars - clear and coloured

- ✗ Drinking glasses, dishes, cookware
- ✗ Window glass, mirrors
- ✗ Ceramic products
- ✗ Light bulbs or light fixtures

## NOT ACCEPTED Do NOT place into Yellow Bag



Hard and soft cover books



Plastic bags and overwrap



Clothing and textiles



Food, yard waste and wood

- ✗ Non-paper gift wrap, foil wrap, cards or paper with glitter
- ✗ Rubber bands, ribbons, bows
- ✗ Padded envelopes
- ✗ Bags and boxes with foil liners
- ✗ Paper towels, napkins and tissues
- ✗ Foil or plastic lined paper bags

## NO HAZARDOUS MATERIALS

Exclude batteries; medical sharps; bleach or aerosol containers with any contents remaining; compressed gas cylinders, for example used propane cylinders; containers for paint, motor oil, vehicle lubricants, or antifreeze; or containers for pesticides with the words DANGER, WARNING or POISON, and precautionary octagon or diamond symbols with skull and cross bones.

### Unused Medication

Empty medication containers can be recycled with Recycle BC, but unused or expired medications can be safely disposed by returning them to community pharmacies. For more information or to find the nearest pharmacy please visit [www.healthsteward.ca](http://www.healthsteward.ca).

## NOT ACCEPTED Do NOT place into Blue Box



Plastic bags and overwrap



Electronics and appliances



Hazardous waste



Toys and games



Glass



Hangers, pots, pans and other scrap metal

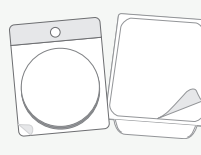
- ✗ Foam packaging
- ✗ Chip or foil bags, candy wrappers
- ✗ Stand up pouches
- ✗ Packaging labeled biodegradable or compostable

- ✗ Wiring, metal cords, hardware
- ✗ Clothing textiles and shoes
- ✗ Food and yard waste

## OTHER FLEXIBLE PLASTIC PACKAGING (return to depot)



Crinkly wrappers and bags



Flexible packaging with plastic seal



Zipper lock and stand-up pouches



Woven plastic bags



Non-food protective packaging

- ✗ Plastic squeeze tubes, plastic-lined paper, paper-lined plastic, plastic strapping
- ✗ 6-pack rings, biodegradable plastic, vinyl