

RECYCLING COLLECTION SCHEDULE

April 2017 - April 2018

APRIL 2017							MAY 2017							JUNE 2017							JULY 2017							AUGUST 2017						
SUN	MON	TUE	WED	THU	FRI	SAT	SUN	MON	TUE	WED	THU	FRI	SAT	SUN	MON	TUE	WED	THU	FRI	SAT	SUN	MON	TUE	WED	THU	FRI	SAT	SUN	MON	TUE	WED	THU	FRI	SAT
26	27	28	29	30	31	1	30	1	2	3	4	5	6	28	29	30	31	1	2	3	25	26	27	28	29	30	1	30	31	1	2	3	4	5
2	3	4	5	6	7	8	7	8	9	10	11	12	13	4	5	6	7	8	9	10	2	3	4	5	6	7	8	6	7	8	9	10	11	12
9	10	11	12	13	14	15	14	15	16	17	18	19	20	11	12	13	14	15	16	17	9	10	11	12	13	14	15	13	14	15	16	17	18	19
16	17	18	19	20	21	22	21	22	23	24	25	26	27	18	19	20	21	22	23	24	16	17	18	19	20	21	22	20	21	22	23	24	25	26
23/30	24	25	26	27	28	29	28	29	30	31	1	2	3	25	26	27	28	29	30	1	23/30	24/31	25	26	27	28	29	27	28	29	30	31	1	2

SEPTEMBER 2017							OCTOBER 2017							NOVEMBER 2017							DECEMBER 2017							JANUARY 2018						
SUN	MON	TUE	WED	THU	FRI	SAT	SUN	MON	TUE	WED	THU	FRI	SAT	SUN	MON	TUE	WED	THU	FRI	SAT	SUN	MON	TUE	WED	THU	FRI	SAT	SUN	MON	TUE	WED	THU	FRI	SAT
27	28	29	30	31	1	2	1	2	3	4	5	6	7	29	30	31	1	2	3	4	26	27	28	29	30	1	2	31	1	2	3	4	5	6
3	4	5	6	7	8	9	8	9	10	11	12	13	14	5	6	7	8	9	10	11	3	4	5	6	7	8	9	7	8	9	10	11	12	13
10	11	12	13	14	15	16	15	16	17	18	19	20	21	12	13	14	15	16	17	18	10	11	12	13	14	15	16	14	15	16	17	18	19	20
17	18	19	20	21	22	23	22	23	24	25	26	27	28	19	20	21	22	23	24	25	17	18	19	20	21	22	23	21	22	23	24	25	26	27
24	25	26	27	28	29	30	29	30	31	1	2	3	4	26	27	28	29	30	1	2	24	25	26	27	28	29	30	28	29	30	31	1	2	3

FEBRUARY 2018							MARCH 2018							APRIL 2018																				
SUN	MON	TUE	WED	THU	FRI	SAT	SUN	MON	TUE	WED	THU	FRI	SAT	SUN	MON	TUE	WED	THU	FRI	SAT	SUN	MON	TUE	WED	THU	FRI	SAT	SUN	MON	TUE	WED	THU	FRI	SAT
28	29	30	31	1	2	3	25	26	27	28	1	2	3	1	2	3	4	5	6	7	29	30	1	2	3	4	5	31						
4	5	6	7	8	9	10	4	5	6	7	8	9	10	8	9	10	11	12	13	14	8	9	10	11	12	13	14							
11	12	13	14	15	16	17	11	12	13	14	15	16	17	15	16	17	18	19	20	21	15	16	17	18	19	20	21							
18	19	20	21	22	23	24	18	19	20	21	22	23	24	22	23	24	25	26	27	28	22	23	24	25	26	27	28							
25	26	27	28	1	2	3	25	26	27	28	29	30	31	29	30	1	2	3	4	5	29	30	1	2	3	4	5							

Place paper, container and glass recycling at curb by:



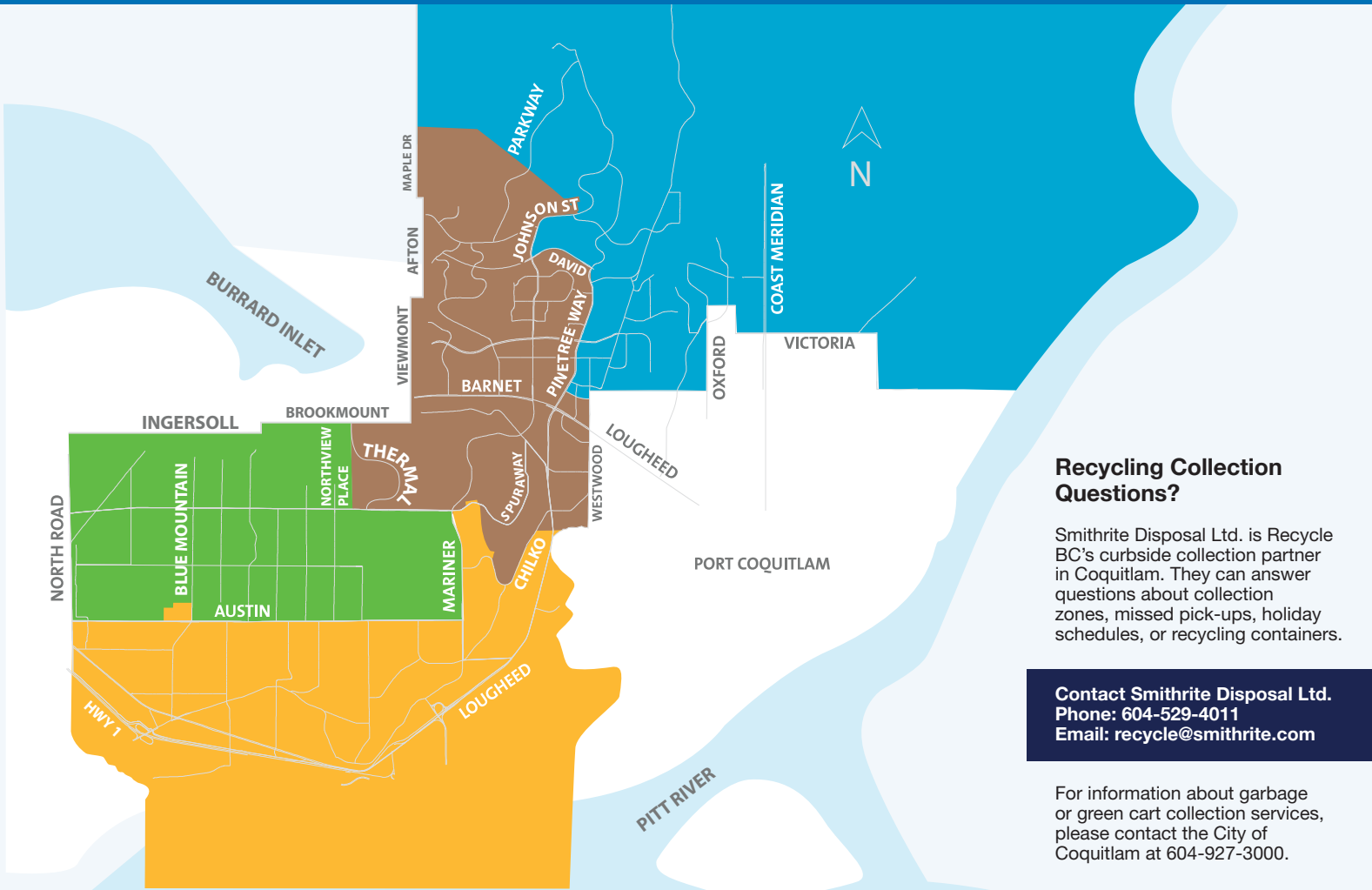
7:00 am

COLLECTION MAP

Check your address & collection schedule. Download our app at RecycleBC.ca



Sign up for reminders, import your collection schedule into your on-line calendar, or download the Recycle BC app on your smartphone. Visit RecycleBC.ca for more information.



Recycling Collection Questions?

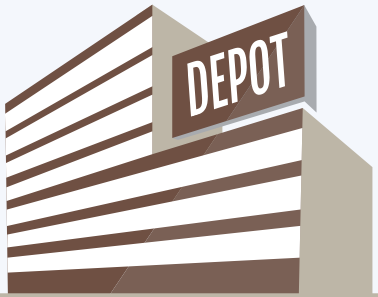
Smithrite Disposal Ltd. is Recycle BC's curbside collection partner in Coquitlam. They can answer questions about collection zones, missed pick-ups, holiday schedules, or recycling containers.

Contact Smithrite Disposal Ltd.
Phone: 604-529-4011
Email: recycle@smithrite.com

For information about garbage or green cart collection services, please contact the City of Coquitlam at 604-927-3000.

DROP-OFF ONLY

TAKE TO RECYCLING DEPOT



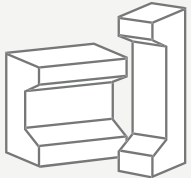
FOAM PACKAGING



Foam meat trays (remove absorbent pad)



Foam take-out containers and cups



Foam cushion packaging used to protect electronics etc.

PLASTIC BAGS AND OVERWRAP



Plastic bags



Outer bags and product wraps

- ✓ Bags for groceries, produce, dry bulk foods, frozen vegetables, water softener, salt, garden products, newspapers, etc.
- ✓ Overwrap for diapers, feminine hygiene products, paper towels, soft drink flats

- ✗ Blue or pink foam insulation, packing chips and peanuts
- ✗ Squishy or flexible foam, foam noodles
- ✗ Crinkly wrap for tea, floral arrangements etc.
- ✗ Pasta and cereal bags, chip and snack bags, stand-up pouches
- ✗ Zipper lock bags, garbage bags, kitchen stretch wrap
- ✗ Plastic shipping envelopes, bubble packaging

NEARBY DEPOTS

Coquitlam Return-It Depot
2554 Barnet Highway, Coquitlam
604-464-6648

Lougheed Return-It Depot
1045A Lougheed Highway, Coquitlam
778-397-5005

Find your nearest depot location at:
RecycleBC.ca



RECYCLEBC™

Making a difference together.

2017-2018
RECYCLING SCHEDULE

City of Coquitlam



RecycleBC.ca

PAPER

PUT INTO REUSABLE
RECYCLING BAG

Recycle at curbside or depot



CONTAINERS

PUT INTO BLUE BOX

Recycle at curbside or depot



GLASS

PUT INTO LIGHT BLUE BOX

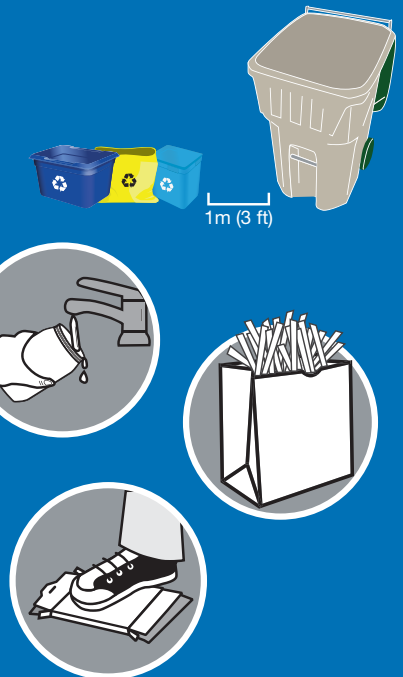
Recycle at curbside or depot



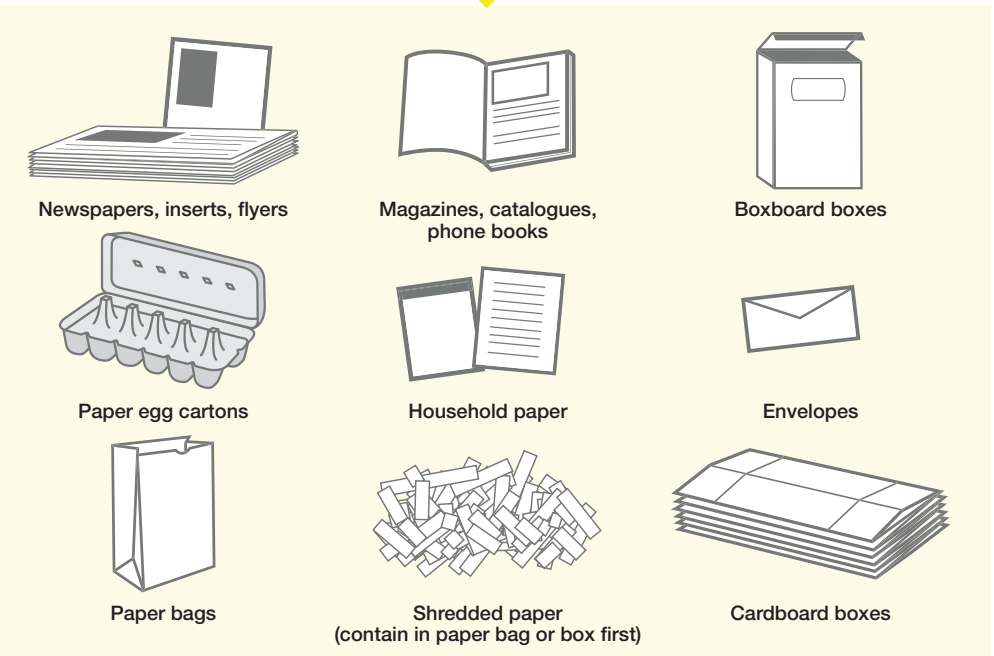
RECYCLING TIPS

You can help ensure that more materials are recycled by following these steps:

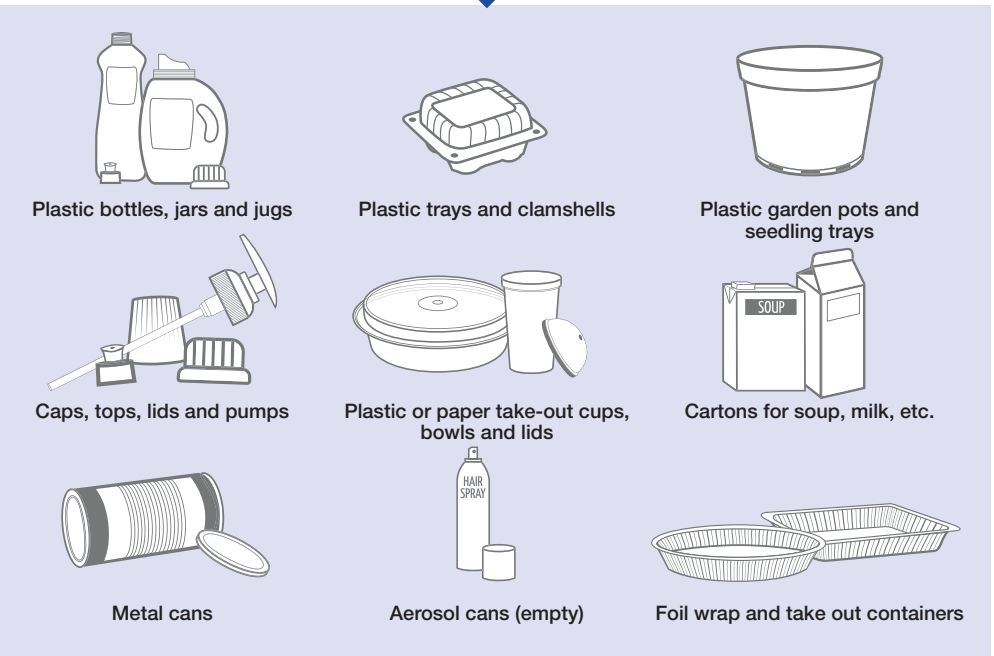
- 1 Place your yellow bag between your light blue box and your blue box, not across the top of them. Allow 1m (3 ft) between your recycling containers and your green bin and garbage bin.
- 2 Empty and rinse containers.
- 3 Contain shredded paper inside a paper bag or box before adding to your recycling.
- 4 Flatten cardboard, remove plastic wrap from cardboard flats. Staples and tape okay. If too large for recycling container, flatten and cut to no larger than 30" wide (78 cm) by 30" tall (78 cm). Stack neatly and securely place beside or between recycling containers.



For more tips, visit www.RecycleBC.ca.



- ✓ Gift cards
- ✓ Paper gift wrap
- ✓ Paper gift bags
- ✓ Paper bags for pet food, flour, sugar, etc.
- ✓ Paper carry-out beverage trays
- ✓ Cores from paper towel and toilet tissue



- ✓ Plastic packaging for toys, batteries etc. Separate plastic from paper backing
- ✓ Plastic pails less than 25L for laundry detergent etc.
- ✓ Spiral wound cans and lids for frozen juice concentrate, chips, etc.
- ✓ Plastic tubs for yogurt, margarine, etc.



! Put all lids in blue box.

Want to recycle something not included here?



Search Recycle BC's Waste Wizard or download a full material list at RecycleBC.ca

To recycle items that are not packaging or printed paper, contact the Recycling Council of BC (RCBC) at 604-732-9253 or visit RCBC.ca.

NOT ACCEPTED

Do NOT place into Yellow Bag

Hard and soft cover books

Paper towels, napkins and tissues

- ✗ Non-paper gift wrap, foil wrap
- ✗ Rubber bands, ribbons, bows
- ✗ Padded envelopes
- ✗ Bags and boxes with foil liners
- ✗ Plastic bags used to cover newspapers/flyers

NO HAZARDOUS MATERIALS

Exclude batteries; medical syringes; bleach or aerosol containers with any contents remaining; compressed gas cylinders, for example used propane cylinders; containers for paint, motor oil, vehicle lubricants, or antifreeze; or containers for pesticides with the words DANGER, WARNING or POISON, and precautionary octagon or diamond symbols with skull and cross bones.

NOT ACCEPTED

Do NOT place into Blue Box

Plastic bags & overwrap

Hazardous waste

Glass

Electronics and appliances

Toys and games

Hangers, pots, pans and other scrap metal

- ✗ Foam packaging
- ✗ Chip or foil bags, candy wrappers
- ✗ Stand up pouches
- ✗ Packaging labeled biodegradable or compostable
- ✗ Wiring, metal cords, hardware
- ✗ Clothing textiles and shoes
- ✗ Food and yard waste

NOT ACCEPTED

Do NOT place into Light Blue Box

Dishes & cookware

Windows & mirrors

Light bulbs

Ceramic products

Return deposit containers for a refund.

RECYCLING COLLECTION QUESTIONS?

Smithrite Disposal Ltd. is Recycle BC's curbside collection partner in Coquitlam. They can answer questions about collection zones, missed pick-ups, holiday schedules, or recycling containers.

Contact: Smithrite Disposal Ltd.
Phone: 604-529-4011
Email: recycle@smithrite.com

ABOUT RECYCLE BC

Originally launched as Multi-Material BC in 2014, Recycle BC is a non-profit organization responsible for residential packaging and printed paper recycling throughout BC, servicing over 1.7 million households. Recycle BC ensures your household materials are picked up, sorted, and responsibly recycled. Our program is funded by over 1,200 businesses that include retailers, manufacturers and restaurants that supply packaging and printed paper to the BC residents, shifting costs away from homeowners.

We have a new name. Multi-Material BC (MMBC) is now:

For more information visit: **RecycleBC.ca**