

# RECYCLING COLLECTION SCHEDULE

July 2020 - June 2021

Place paper, container and glass recycling at curb by:



8:00 am

JULY 2020						
SUN	MON	TUE	WED	THU	FRI	SAT
			1	2	3	4
5	6	7	8	9	10	11
12	13	14	15	16	17	18
19	20	21	22	23	24	25
26	27	28	29	30	31	

AUGUST 2020						
SUN	MON	TUE	WED	THU	FRI	SAT
						1
2	3	4	5	6	7	8
9	10	11	12	13	14	15
16	17	18	19	20	21	22
23	24	25	26	27	28	29

SEPTEMBER 2020						
SUN	MON	TUE	WED	THU	FRI	SAT
		1	2	3	4	5
6	7	8	9	10	11	12
13	14	15	16	17	18	19
20	21	22	23	24	25	26
27	28	29	30			

OCTOBER 2020						
SUN	MON	TUE	WED	THU	FRI	SAT
				1	2	3
4	5	6	7	8	9	10
11	12	13	14	15	16	17
18	19	20	21	22	23	24
25	26	27	28	29	30	31

NOVEMBER 2020						
SUN	MON	TUE	WED	THU	FRI	SAT
1	2	3	4	5	6	7
8	9	10	11	12	13	14
15	16	17	18	19	20	21
22	23	24	25	26	27	28
29	30					

DECEMBER 2020						
SUN	MON	TUE	WED	THU	FRI	SAT
		1	2	3	4	5
6	7	8	9	10	11	12
13	14	15	16	17	18	19
20	21	22	23	24	25	26
27	28	29	30	31		

JANUARY 2021						
SUN	MON	TUE	WED	THU	FRI	SAT
					1	2
3	4	5	6	7	8	9
10	11	12	13	14	15	16
17	18	19	20	21	22	23
24	25	26	27	28	29	30

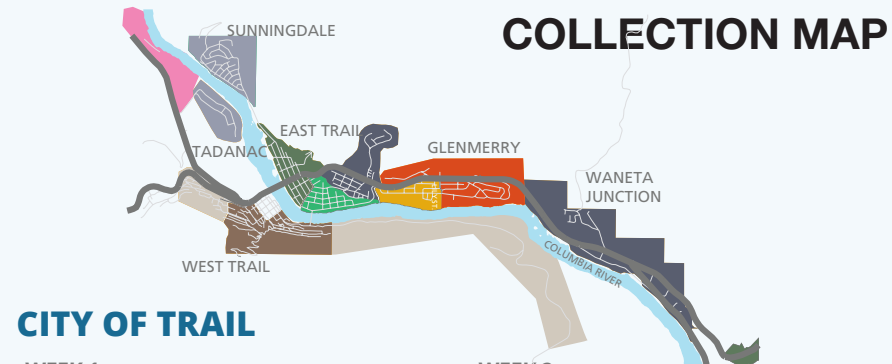
FEBRUARY 2021						
SUN	MON	TUE	WED	THU	FRI	SAT
	1	2	3	4	5	6
7	8	9	10	11	12	13
14	15	16	17	18	19	20
21	22	23	24	25	26	27
28						

MARCH 2021						
SUN	MON	TUE	WED	THU	FRI	SAT
	1	2	3	4	5	6
7	8	9	10	11	12	13
14	15	16	17	18	19	20
21	22	23	24	25	26	27
28	29	30	31			

APRIL 2021						
SUN	MON	TUE	WED	THU	FRI	SAT
				1	2	3
4	5	6	7	8	9	10
11	12	13	14	15	16	17
18	19	20	21	22	23	24
25	26	27	28	29	30	

MAY 2021						
SUN	MON	TUE	WED	THU	FRI	SAT
						1
2	3	4	5	6	7	8
9	10	11	12	13	14	15
16	17	18	19	20	21	22
23	24	25	26	27	28	29

JUNE 2021						
SUN	MON	TUE	WED	THU	FRI	SAT
		1	2	3	4	5
6	7	8	9	10	11	12
13	14	15	16	17	18	19
20	21	22	23	24	25	26
27	28	29	30			



## CITY OF TRAIL

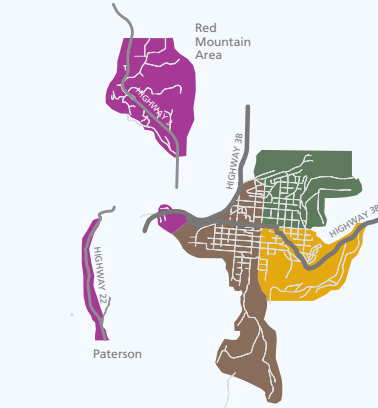
### WEEK 1

■ TUESDAY: West Trail east of Glover Dockerill, Second St.  
■ WEDNESDAY: East Trail west of 5th & McQuarrie St. to Gyro Park  
■ THURSDAY: Glenmerry west of Lily St.  
■ FRIDAY: Waneta, Miral Heights & Shavers Bench

### WEEK 2

■ MONDAY: Rivervale and Oasis  
■ TUESDAY: West Trail west of Glover Dockerill, Second St. & Casino  
■ WEDNESDAY: East Trail east of 5th & McQuarrie St.  
■ THURSDAY: Glenmerry north of HWY 3 & East of Lily St.  
■ FRIDAY: Sunningdale & Tadanac

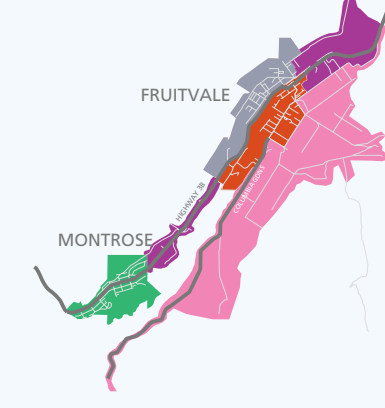
## ROSSLAND & AREA



### WEEK 1

■ MONDAY: Red Mountain, Black Bear & Paterson  
■ TUESDAY: Rossland west of Spokane St., including Southbelt  
■ WEDNESDAY: Upper Rossland east of Spokane St., North of Columbia Ave.  
■ THURSDAY: Lower Rossland east of Spokane St., South of Columbia Ave.

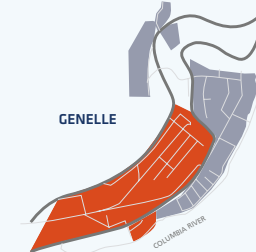
## BEAVER VALLEY



### WEEK 1

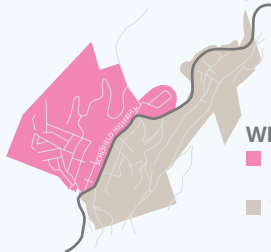
■ MONDAY: Area A North/West  
■ TUESDAY: Area A South/East  
■ WEDNESDAY: Village of Montrose  
■ THURSDAY: Fruitvale South of the Tracks  
■ FRIDAY: Fruitvale North of the Tracks

## GENELLE



■ WEEK 2  
■ THURSDAY: Upper Genelle  
■ FRIDAY: Lower Genelle & China Creek

## WARFIELD



■ WEEK 2  
■ MONDAY: Upper Warfield  
■ TUESDAY: Lower Warfield / Annabel

Download the App

View your collection schedule, sign up for recycling reminders, see depot locations, and search materials with the Recycle BC app.

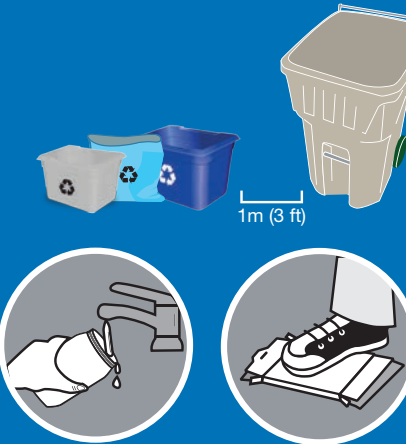
RecycleBC.ca/App

Please find a detailed material list at RecycleBC.ca/what-can-i-recycle.  
請瀏覽 RecycleBC.ca/what-can-i-recycle 查詢物料清單中文版。  
ਕਿਰਪਾ ਕਰਕੇ ਇਕ ਅਨੁਵਾਦਿਤ ਸਮੱਗਰੀ ਸੂਚੀ ਨੂੰ ਇਥੇ ਦਿਖੋ RecycleBC.ca/what-can-i-recycle.  
번역된 자료 목록은 RecycleBC.ca/what-can-i-recycle 에서 찾으십시오.



ENSURE MORE MATERIALS ARE RECYCLED AND KEPT OUT OF LANDFILL BY REMEMBERING THESE PRO-TIPS:

- 1 Line it up.** Put your blue bag between or next to your recycling containers and not on top of them. Keep 1m (3ft) between your recycling containers and your garbage/green bin.
- 2 Keep it clean.** Empty and rinse all containers.
- 3 Flatten and cut.** If your cardboard is too large for your blue box or bag, flatten and cut it down to smaller pieces. 30" x 30" (76cm x 76cm) or smaller. Stack them between recycling containers. Remember to keep plastic wrap out of your recycling!
- 4 Connect with us.** Download our app, email us at [info@recyclebc.ca](mailto:info@recyclebc.ca), connect with us on social media @RecycleBC.



## ? RECYCLING COLLECTION QUESTIONS?

Alpine is Recycle BC's curbside collection partner in the Regional District of Kootenay Boundary. They can answer questions about collection zones, missed pick-ups, holiday schedules, or recycling containers.

**Contact: Alpine**  
**Phone: 1-866-596-5444**  
**Email: [recycle@alpinegroup.ca](mailto:recycle@alpinegroup.ca)**

For information about other waste collection and disposal services, please contact the Regional District of Kootenay Boundary at 1-800-355-7352 or [www.rdkb.com](http://www.rdkb.com), or your local government. or your local government.

## NEARBY DEPOTS

**Trail Bottle Depot**  
562 Rossland Avenue, Trail  
250-364-3025

**McKelvey Creek Landfill**  
1900 Highway 3B, Trail  
250-368-9148

## ABOUT RECYCLE BC

Recycle BC is a not-for-profit organization responsible for residential packaging and paper recycling throughout BC, servicing over 1.8 million households. Recycle BC ensures your household materials are picked up, sorted, and responsibly recycled. Our program is funded by over 1,200 businesses that include retailers, manufacturers and restaurants that supply packaging and paper to BC residents, shifting costs away from homeowners.

For more information visit:

RecycleBC.ca

@RecycleBC



RECYCLED  
Paper made from  
recycled material  
FSC® C136079

NEW FOR  
2020-2021!

NEW GLASS BOX



RECYCLEBC™

Making a difference together.

## 2020-2021 RECYCLING SCHEDULE

## Regional District of Kootenay Boundary (KOOTENAY REGION)



RecycleBC.ca

# PAPER

PUT INTO BLUE BAG  
OR BLUE BOX

Recycle at curbside or depot  
Clean and dry paper only



# CONTAINERS

PUT INTO BLUE BOX

Recycle at curbside or depot  
Empty and rinse containers



# GLASS

PUT INTO GREY BOX

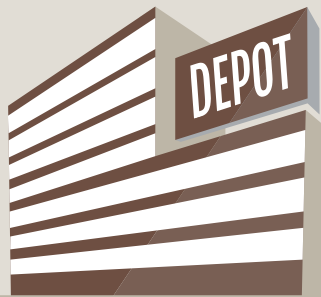
Recycle at curbside or depot  
Empty and rinse glass bottles and jars



# DROP-OFF ONLY

TAKE TO RECYCLING DEPOT

Not accepted in your blue or grey boxes



Newspapers, inserts, flyers

Magazines, catalogues, phone books

Boxboard boxes

Moulded paper

Household paper

Envelopes

Paper bags

Shredded paper (contain in paper bag or box first)

Cardboard boxes

- ✓ Greeting cards
  - ✓ Paper gift wrap
  - ✓ Paper gift bags
- ✓ Paper carry-out beverage trays
  - ✓ Cores from paper towel and toilet paper

Plastic bottles, jars and jugs

Plastic trays and clamshells

Plastic garden pots and seedling trays

Caps, tops, lids and pumps

Plastic or paper take-out cups, bowls and lids

Cartons for soup, milk, etc.

Metal cans

Aerosol cans (empty)

Foil wrap and take out containers

- ✓ Plastic packaging for toys, batteries etc. Separate plastic from paper backing
  - ✓ Plastic pails less than 25L for laundry detergent, cat litter, etc.
- ✓ Spiral wound cans and lids for frozen juice concentrate, chips, etc.
  - ✓ Plastic tubs for yogurt, margarine, etc.

Glass bottles - clear and coloured

Glass jars - clear and coloured

! Put all lids in blue box.

**NOT ACCEPTED**  
Do NOT place into Grey Box

- ✗ Drinking glasses, dishes, cookware
- ✗ Window glass, mirrors
- ✗ Ceramic products
- ✗ Light bulbs or light fixtures

🔍 **Want to recycle something not included here?**

Search Recycle BC's Waste Wizard or download a full material list at [RecycleBC.ca](https://recyclebc.ca).

To recycle items that are not packaging or paper, contact the Recycling Council of BC (RCBC) at 1-800-667-4321 or visit [RCBC.ca](https://rcbc.ca).

**Unused Medication**

Empty medication containers can be recycled with Recycle BC, but unused or expired medications can be safely disposed of by returning them to community pharmacies. For more information or to find the nearest pharmacy please visit [www.healthsteward.ca](https://www.healthsteward.ca).

**FOAM PACKAGING** (return to depot)

Foam meat trays (remove absorbent pad)

Foam take-out containers and cups

Foam cushion packaging used to protect electronics etc.

✗ Blue or pink foam insulation, packing chips and peanuts

✗ Squishy or flexible foam, foam noodles

**PLASTIC BAGS AND OVERWRAP**  
(return to depot)

Plastic bags

Outer bags and product wraps

- ✓ Bags for groceries, produce, dry bulk foods, frozen vegetables, water softener, salt, garden products, newspapers, etc.
- ✓ Overwrap for diapers, feminine hygiene products, paper towels, soft drink flats

**NOT ACCEPTED**  
Do NOT place into Blue Bag or Blue Box

Hard and soft cover books

Plastic bags and overwrap

Clothing and textiles

Food, yard waste and wood

- ✗ Non-paper gift wrap, foil wrap, cards or paper with glitter
- ✗ Rubber bands, ribbons, bows
- ✗ Padded envelopes
- ✗ Bags and boxes with foil liners
- ✗ Paper towels, napkins and tissues
- ✗ Foil or plastic lined paper bags

**NO HAZARDOUS MATERIALS**

Exclude batteries; medical sharps; bleach or aerosol containers with any contents remaining; compressed gas cylinders, for example used propane cylinders; containers for paint, motor oil, vehicle lubricants, or antifreeze; or containers for pesticides with the words DANGER, WARNING, or POISON, and precautionary octagon or diamond symbols with skull and cross bones.

**NOT ACCEPTED**  
Do NOT place into Blue Box

Plastic bags and overwrap

Hazardous waste

Glass

Electronics and appliances

Toys and games

Hangers, pots, pans and other scrap metal

- ✗ Foam packaging
- ✗ Chip or foil bags, candy wrappers
- ✗ Stand-up pouches
- ✗ Packaging labeled biodegradable or compostable
- ✗ Wiring, metal cords, hardware
- ✗ Clothing, textiles and shoes
- ✗ Food and yard waste

**Characteristics of Plastic Bags and Overwrap vs. Other Flexible Plastic Packaging**

**PLASTIC BAGS AND OVERWRAP**

Can Poke Your Thumb Through It

Not Crinkly

Single Material

**OTHER FLEXIBLE PLASTIC PACKAGING**

Doesn't Stretch

Crinkly

Foil Lining

**OTHER FLEXIBLE PLASTIC PACKAGING** (return to depot)

Crinkly wrappers and bags

Flexible packaging with plastic seal

Zipper lock and stand-up pouches

Woven plastic bags

Non-food protective packaging

For more information, visit [RecycleBC.ca/FlexiblePackaging](https://recyclebc.ca/FlexiblePackaging)

- ✗ Plastic squeeze tubes, plastic-lined paper, paper-lined plastic, plastic strapping
- ✗ 6-pack rings, biodegradable plastic, vinyl