

RECYCLING COLLECTION SCHEDULE

July 2022 - June 2023

Place paper, container and glass recycling at curb by:



7:30 am

JULY 2022							AUGUST 2022							SEPTEMBER 2022							OCTOBER 2022						
SUN	MON	TUE	WED	THU	FRI	SAT	SUN	MON	TUE	WED	THU	FRI	SAT	SUN	MON	TUE	WED	THU	FRI	SAT	SUN	MON	TUE	WED	THU	FRI	SAT
					1	2		1	2	3	4	5	6					1	2	3							1
3	4	5	6	7	8	9	7	8	9	10	11	12	13	4	5	6	7	8	9	10	2	3	4	5	6	7	8
10	11	12	13	14	15	16	14	15	16	17	18	19	20	11	12	13	14	15	16	17	9	10	11	12	13	14	15
17	18	19	20	21	22	23	21	22	23	24	25	26	27	18	19	20	21	22	23	24	16	17	18	19	20	21	22
24	25	26	27	28	29	30	28	29	30	31				25	26	27	28	29	30		23	24	25	26	27	28	29
NOVEMBER 2022							DECEMBER 2022							JANUARY 2023							FEBRUARY 2023						
SUN	MON	TUE	WED	THU	FRI	SAT	SUN	MON	TUE	WED	THU	FRI	SAT	SUN	MON	TUE	WED	THU	FRI	SAT	SUN	MON	TUE	WED	THU	FRI	SAT
		1	2	3	4	5					1	2	3	1	2	3	4	5	6	7				1	2	3	4
6	7	8	9	10	11	12	4	5	6	7	8	9	10	8	9	10	11	12	13	14	5	6	7	8	9	10	11
13	14	15	16	17	18	19	11	12	13	14	15	16	17	15	16	17	18	19	20	21	12	13	14	15	16	17	18
20	21	22	23	24	25	26	18	19	20	21	22	23	24	22	23	24	25	26	27	28	19	20	21	22	23	24	25
27	28	29	30				25	26	27	28	29	30	31	29	30	31					26	27	28				
MARCH 2023							APRIL 2023							MAY 2023							JUNE 2023						
SUN	MON	TUE	WED	THU	FRI	SAT	SUN	MON	TUE	WED	THU	FRI	SAT	SUN	MON	TUE	WED	THU	FRI	SAT	SUN	MON	TUE	WED	THU	FRI	SAT
			1	2	3	4							1		1	2	3	4	5	6					1	2	3
5	6	7	8	9	10	11	2	3	4	5	6	7	8	7	8	9	10	11	12	13	4	5	6	7	8	9	10
12	13	14	15	16	17	18	9	10	11	12	13	14	15	14	15	16	17	18	19	20	11	12	13	14	15	16	17
19	20	21	22	23	24	25	16	17	18	19	20	21	22	21	22	23	24	25	26	27	18	19	20	21	22	23	24
26	27	28	29	30	31		23	24	25	26	27	28	29	28	29	30	31				25	26	27	28	29	30	

ENSURE MORE MATERIALS ARE RECYCLED AND KEPT OUT OF LANDFILL BY REMEMBERING THESE PRO-TIPS:

- 1 Line it up.** Put your yellow bag between your recycling containers and not on top of them. Keep 1m (3ft) to allow room for garbage/green bin collection trucks.
- 2 Keep it clean.** Empty and rinse containers to prevent contamination, ensure more material is recycled, and avoid attracting wildlife when material is set out for collection.
- 3 Flatten and cut.** If your cardboard is too large for your yellow bag, flatten and cut it down to smaller pieces. 30 inches by 30 inches (76cm x 76cm) or smaller. Loosely stack them between recycling containers. Remember to keep plastic wrap out of your recycling!
- 4 Help avoid littering the streets and alleys.** Avoid overfilling your recycling boxes to ensure they are not spilled during collection. If you are unable to comfortably fit your material into your boxes, contact Recycle BC's collection partner to order an additional box, or use a similar, open box (e.g. laundry basket, storage box) to set out correctly sorted material.
- 5 Connect with us.** Download our app, email us at info@recyclebc.ca, or connect with us on social media @RecycleBC.



DOWNLOAD THE APP
OR VISIT
[RECYCLEBC.CA/LANGLEY](https://recyclebc.ca/langley)

VIEW SCHEDULE
SET UP NOTIFICATIONS
SEARCH MATERIALS
FIND A DEPOT



RECYCLEBC™

Making a difference together.

2022-2023
RECYCLING SCHEDULE

City of Langley



[RecycleBC.ca/Langley](https://recyclebc.ca/langley)

? RECYCLING COLLECTION QUESTIONS?

GFL Environmental is Recycle BC's curbside collection partner in the City of Langley. They can answer questions about collection zones, missed pick-ups, holiday schedules, or recycling containers.

Contact: GFL Environmental
Phone: 778-765-3662 or 604-529-4011
Email: srrecycle@gflenv.com

NEARBY DEPOTS

Fraser Valley Bottle & Return-It Depot
#108 - 22575 Fraser Highway, Langley
604-533-8807

Walnut Grove Bottle & Return Centre
#8 - 20280 97 Ave, Langley
604-513-0420

Langley Bottle Depot
20137 Industrial Avenue Langley

London Drugs - Langley*
1B - 20202 66th Ave, Langley
604-448-4818

London Drugs - Cloverdale*
#821 - 17685 64 Ave, Surrey
604-448-4875

*London Drugs accept plastic bags and overwrap, foam packaging, and other flexible plastic packaging only. Due to space limitations, a maximum of one grocery bag of each material is suggested per visit.

ABOUT RECYCLE BC

Recycle BC is a not-for-profit organization responsible for residential packaging and paper recycling throughout BC, servicing over 1.8 million households. Recycle BC ensures your household materials are picked up, sorted, and responsibly managed and recycled. Our program is funded by over 1,200 businesses that include retailers, manufacturers and restaurants that supply packaging and paper to BC residents, shifting costs away from homeowners.

For more information visit:

[RecycleBC.ca](https://recyclebc.ca)
[Facebook](https://www.facebook.com/RecycleBC) [Instagram](https://www.instagram.com/RecycleBC) [TikTok](https://www.tiktok.com/@RecycleBC) [YouTube](https://www.youtube.com/RecycleBC) @RecycleBC



Download the App

View your collection schedule, sign up for recycling reminders, see depot locations, and search materials with the Recycle BC app.



[RecycleBC.ca/App](https://recyclebc.ca/app)

Please find a detailed material list at [RecycleBC.ca/what-can-i-recycle](https://recyclebc.ca/what-can-i-recycle).
請瀏覽 [RecycleBC.ca/what-can-i-recycle](https://recyclebc.ca/what-can-i-recycle)
查詢物料清單中文版。
ਕਿਰਪਾ ਕਰਕੇ ਇਕ ਅਨੁਵਾਦਿਤ ਸਮੱਗਰੀ ਸੂਚੀ ਨੂੰ ਇਥੇ ਦੇਖੋ
[RecycleBC.ca/what-can-i-recycle](https://recyclebc.ca/what-can-i-recycle).
번역된 자료 목록은 [RecycleBC.ca/what-can-i-recycle](https://recyclebc.ca/what-can-i-recycle)
에서 찾으십시오.
لطفاً فهرست مواد را به تفصیل در
[RecycleBC.ca/what-can-i-recycle](https://recyclebc.ca/what-can-i-recycle) مشاهده کنید.

COLLECTION MAP

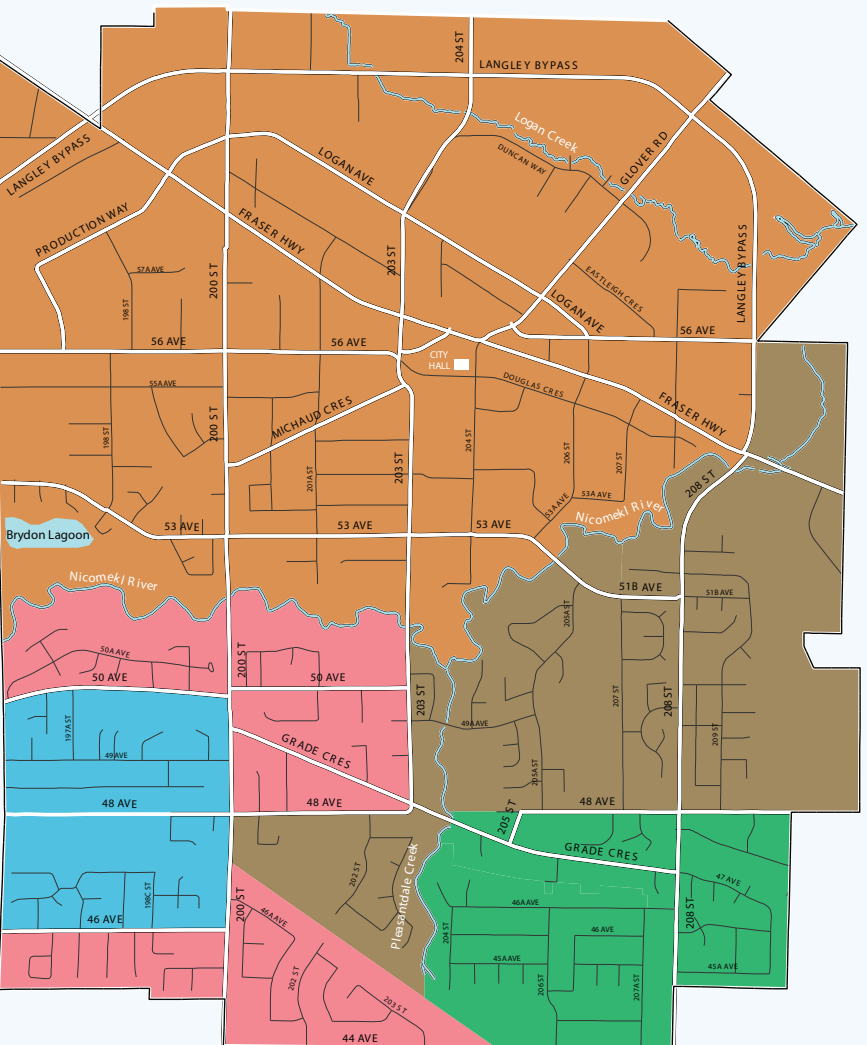
- MONDAY
- TUESDAY
- WEDNESDAY
- THURSDAY
- FRIDAY

Recycling Collection Questions?

GFL Environmental is Recycle BC's collection partner in City of Langley. They can answer questions about collection zones, missed pick-ups, holiday schedules, or recycling containers.

Contact GFL Environmental
Call: 778-765-3662 or 604-529-4011
Email: srrecycle@gflenv.com

For information about garbage or green waste collection services, please contact the City of Langley's contractor, Emterra, at 604-635-0999, or col@emterra.ca.



PAPER

PUT INTO YELLOW BAG

Recycle at curbside or depot
Clean and dry paper only
Cut excess cardboard to 76cm x 76cm
and stack beside bag



CONTAINERS

PUT INTO BLUE BOX

Recycle at curbside or depot
Empty and rinse containers



GLASS

PUT INTO GREEN
OR GREY BOX

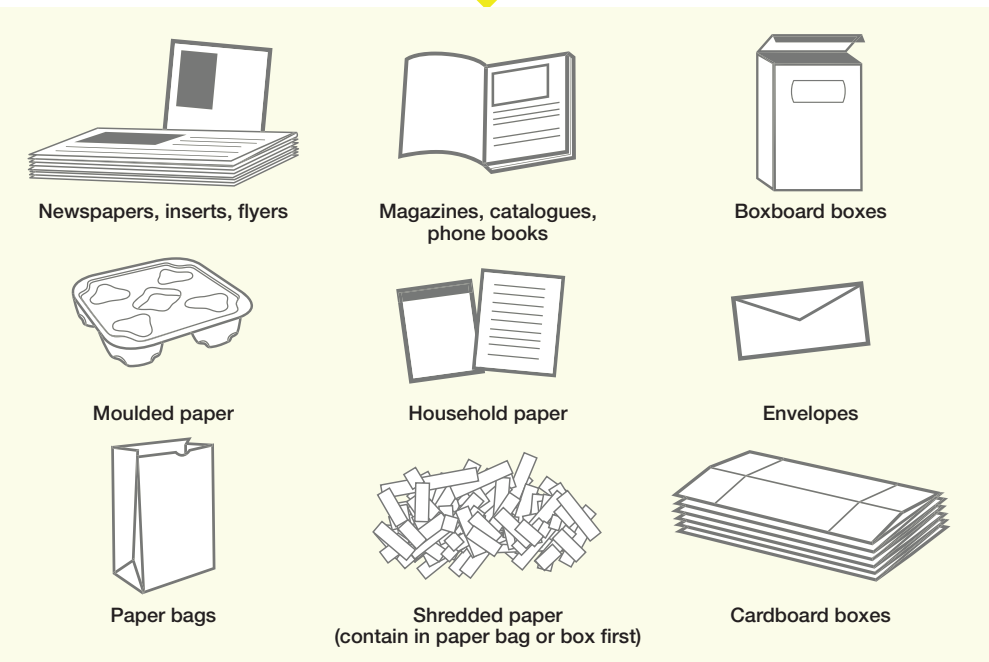
Recycle at curbside or depot
Empty and rinse glass bottles and jars



DROP-OFF ONLY

TAKE TO RECYCLING DEPOT

Not accepted in your yellow bag,
blue box, or green/grey box



- ✓ Greeting cards
- ✓ Paper gift wrap
- ✓ Paper gift bags
- ✓ Paper carry-out beverage trays
- ✓ Cores from paper towel and toilet paper



- ✓ Plastic packaging for toys, batteries etc. Separate plastic from paper backing
- ✓ Plastic pails less than 25L for laundry detergent, cat litter, etc.
- ✓ Spiral wound cans and lids for frozen juice concentrate, chips, etc.
- ✓ Plastic tubs for yogurt, margarine, etc.



! Put all lids in blue box.

NOT ACCEPTED

Do NOT place into Green or Grey Box

- ✗ Drinking glasses, dishes, cookware
- ✗ Ceramic products
- ✗ Window glass, mirrors
- ✗ Light bulbs or light fixtures



Want to recycle something not included here?

Search Recycle BC's Waste Wizard or download a full material list at [RecycleBC.ca](https://www.recyclebc.ca).

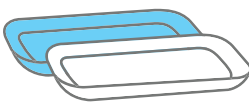
To recycle items that are not packaging or paper, visit the Recycling Council of BC (RCBC) website at [RCBC.ca](https://www.rcbc.ca).

Unused Medication

Empty medication containers can be recycled with Recycle BC, but unused or expired medications can be safely disposed of by returning them to community pharmacies. For more information or to find the nearest pharmacy please visit www.healthsteward.ca.

FOAM PACKAGING

(return to depot)



Foam meat trays
(remove absorbent pad)



Foam take-out containers
and cups



Foam cushion packaging used
to protect electronics etc.

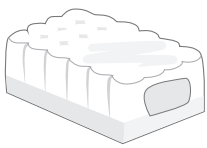
- ✗ Blue or pink foam insulation, packing chips and peanuts
- ✗ Squishy or flexible foam, foam noodles

PLASTIC BAGS AND OVERWRAP

(return to depot)



Plastic bags



Outer bags and product wraps

- ✓ Bags for groceries, produce, dry bulk foods, frozen vegetables, water softener, salt, garden products, newspapers, etc.
- ✓ Overwrap for diapers, feminine hygiene products, paper towels, soft drink flats

NOT ACCEPTED

Do NOT place into Yellow Bag



- ✗ Non-paper gift wrap, foil wrap, cards or paper with glitter
- ✗ Rubber bands, ribbons, bows
- ✗ Padded envelopes
- ✗ Bags and boxes with foil liners
- ✗ Paper towels, napkins and tissues
- ✗ Foil or plastic lined paper bags

NO HAZARDOUS MATERIALS

Exclude batteries; medical sharps; bleach or aerosol containers with any contents remaining; containers with the words COMBUSTIBLE, FLAMMABLE or VERY FLAMMABLE on them (except cosmetic and beauty product containers); compressed gas cylinders, for example used propane cylinders; containers for paint, motor oil, vehicle lubricants, or antifreeze; or containers for pesticides with the words DANGER, WARNING, or POISON, and precautionary octagon or diamond symbols with skull and cross bones.

NOT ACCEPTED

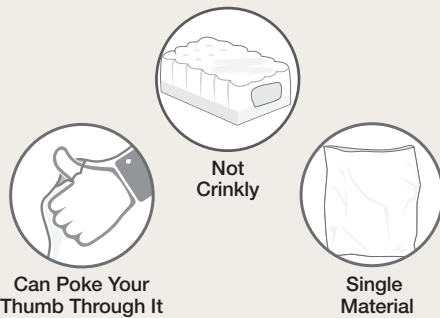
Do NOT place into Blue Box



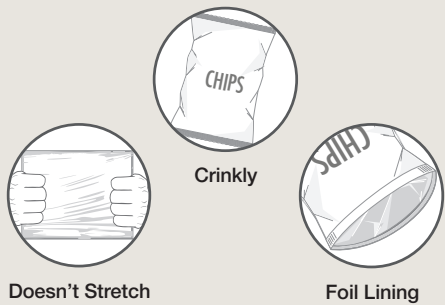
- ✗ Foam packaging
- ✗ Chip or foil bags, candy wrappers
- ✗ Stand-up pouches
- ✗ Packaging labeled biodegradable or compostable
- ✗ Wiring, metal cords, hardware
- ✗ Clothing, textiles and shoes
- ✗ Food and yard waste

Characteristics of Plastic Bags and Overwrap vs. Other Flexible Plastic Packaging

PLASTIC BAGS AND OVERWRAP



OTHER FLEXIBLE PLASTIC PACKAGING



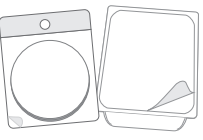
For more information, visit [RecycleBC.ca/FlexiblePackaging](https://www.recyclebc.ca/FlexiblePackaging)

OTHER FLEXIBLE PLASTIC PACKAGING

(return to depot)



Crinkly wrappers
and bags



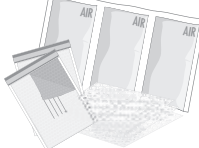
Flexible packaging
with plastic seal



Zipper lock and
stand-up pouches



Woven plastic bags



Non-food protective packaging

- ✗ Plastic squeeze tubes, plastic-lined paper, paper-lined plastic, plastic strapping
- ✗ 6-pack rings, biodegradable plastic, vinyl