



A #BETTERBC STARTS WITH ALL OF US.

Team BC keeps about 200,000 tonnes of packaging and paper out of landfills and the environment every year. But it isn't time for a victory lap yet, because we still have a lot of work to do together.

To win the fight against waste, we need to make sure that we are recycling more and recycling right. Let's show em' what we can do!

PLASTIC PACKAGING

Did you know? 94% of BC residents think we should reduce and recycle plastic packaging, but only 43% of plastics are actually set out for collection or taken to a depot. Let's turn our good intentions into action!

You can make a difference by joining in - put hard plastic packaging in your blue box and take flexible plastics (like plastic bags, zipper-lock pouches and crinkly wrappers and bags) to a depot or London Drugs store.

More and more BC residents are taking their flexible plastics and foam packaging to depots instead of letting them end up in landfills, our communities or nature.

You can join in and make a difference by bringing these items to a depot or London Drugs store near you. If everyone in BC brought their flexible plastics to the depot we would collect and recycle 389 full-sized swimming pools full of flexible plastics, keeping it out of the landfill. Think of the impact we can have.

METAL AND FOIL

Did you know that metal and foil packaging can be recycled? Even the aluminum foil from your casserole or turkey dinner can be recycled.

Give it a rinse to get off most of the food residue and recycle it in your blue box!

Did you know that Recycle BC is recycling 94% of all materials that are received? But this only works if we set materials out for collection or return them to the depot. Think of the impact we can all have together.

Use the Recycle BC app to learn what you can recycle and where.

RECYCLING COLLECTION SCHEDULE

July 2025 - June 2026

Place paper and containers recycling at curb by:



8:00 am

JULY 2025						
SUN	MON	TUE	WED	THU	FRI	SAT
		1	2	3	4	5
6	7	8	9	10	11	12
13	14	15	16	17	18	19
20	21	22	23	24	25	26
27	28	29	30	31		

SEPTEMBER 2025						
SUN	MON	TUE	WED	THU	FRI	SAT
	1	2	3	4	5	6
7	8	9	10	11	12	13
14	15	16	17	18	19	20
21	22	23	24	25	26	27
28	29	30				

NOVEMBER 2025						
SUN	MON	TUE	WED	THU	FRI	SAT
						1
2	3	4	5	6	7	8
9	10	11	12	13	14	15
16	17	18	19	20	21	22
23	24	25	26	27	28	29

JANUARY 2026						
SUN	MON	TUE	WED	THU	FRI	SAT
					1	2
3	4	5	6	7	8	9
10	11	12	13	14	15	16
17	18	19	20	21	22	23
24	25	26	27	28	29	30

MARCH 2026						
SUN	MON	TUE	WED	THU	FRI	SAT
1	2	3	4	5	6	7
8	9	10	11	12	13	14
15	16	17	18	19	20	21
22	23	24	25	26	27	28
29	30	31				

MAY 2026						
SUN	MON	TUE	WED	THU	FRI	SAT
					1	2
3	4	5	6	7	8	9
10	11	12	13	14	15	16
17	18	19	20	21	22	23
24	25	26	27	28	29	30

AUGUST 2025						
SUN	MON	TUE	WED	THU	FRI	SAT
						1
2	3	4	5	6	7	8
9	10	11	12	13	14	15
16	17	18	19	20	21	22
23	24	25	26	27	28	29

OCTOBER 2025						
SUN	MON	TUE	WED	THU	FRI	SAT
			1	2	3	4
5	6	7	8	9	10	11
12	13	14	15	16	17	18
19	20	21	22	23	24	25
26	27	28	29	30	31	

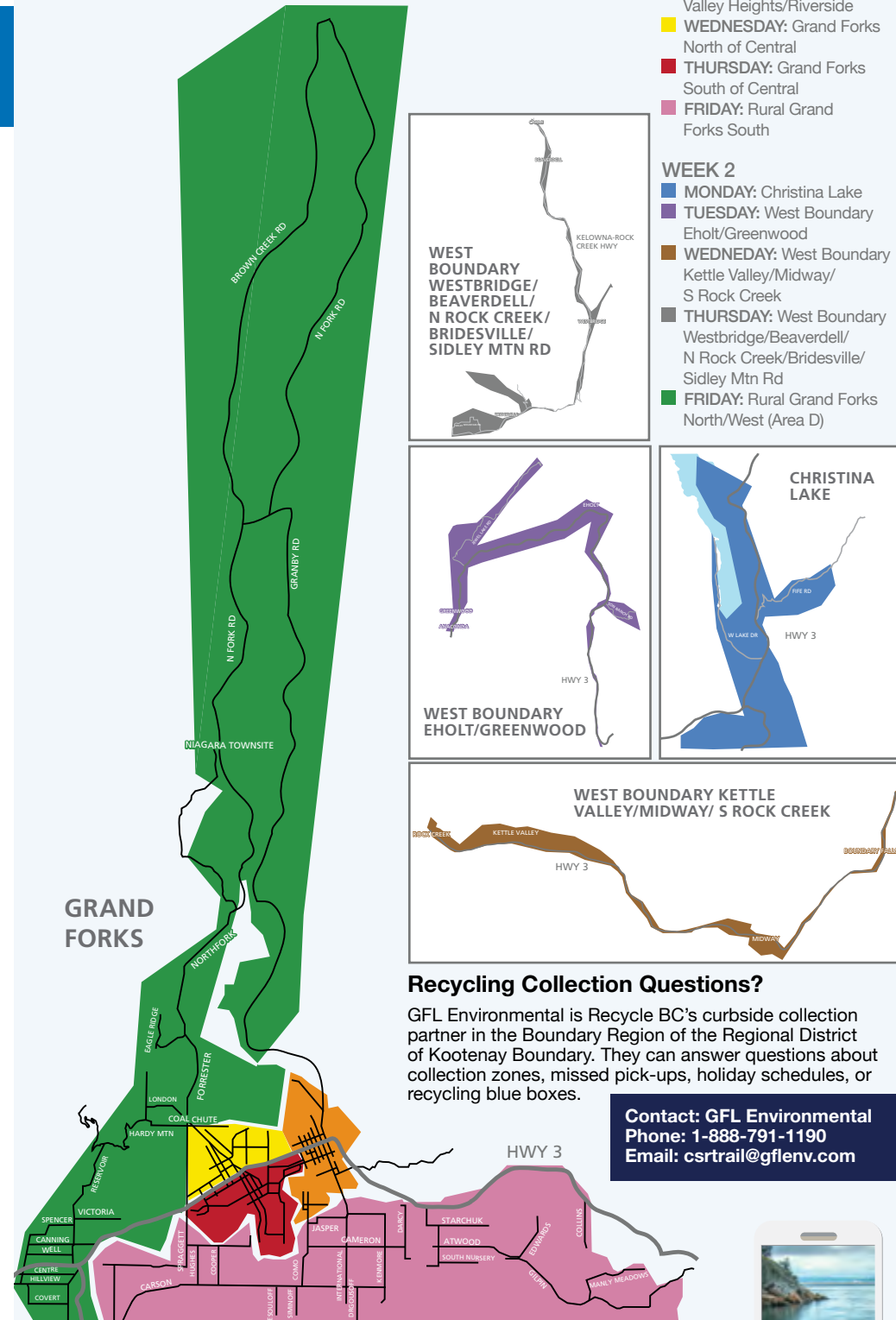
DECEMBER 2025						
SUN	MON	TUE	WED	THU	FRI	SAT
	1	2	3	4	5	6
7	8	9	10	11	12	13
14	15	16	17	18	19	20
21	22	23	24	25	26	27
28	29	30	31			

FEBRUARY 2026						
SUN	MON	TUE	WED	THU	FRI	SAT
1	2	3	4	5	6	7
8	9	10	11	12	13	14
15	16	17	18	19	20	21
22	23	24	25	26	27	28

APRIL 2026						
SUN	MON	TUE	WED	THU	FRI	SAT
			1	2	3	4
5	6	7	8	9	10	11
12	13	14	15	16	17	18
19	20	21	22	23	24	25
26	27	28	29	30		

JUNE 2026						
SUN	MON	TUE	WED	THU	FRI	SAT
	1	2	3	4	5	6
7	8	9	10	11	12	13
14	15	16	17	18	19	20
21	22	23	24	25	26	27
28	29	30				

COLLECTION MAP



Recycling Collection Questions?

GFL Environmental is Recycle BC's curbside collection partner in the Boundary Region of the Regional District of Kootenay Boundary. They can answer questions about collection zones, missed pick-ups, holiday schedules, or recycling blue boxes.

Contact: GFL Environmental
Phone: 1-888-791-1190
Email: csrtrail@gflenv.com

Download the App

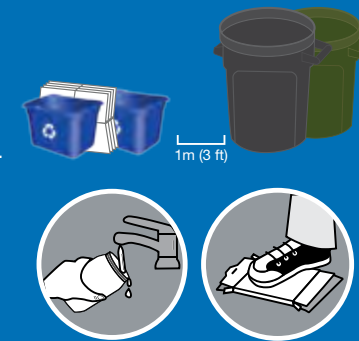
View your collection schedule, sign up for recycling reminders, see depot locations, and search materials with the Recycle BC app.

RecycleBC.ca/App

Please find a detailed material list at RecycleBC.ca/what-can-i-recycle.
請瀏覽 RecycleBC.ca/what-can-i-recycle 查詢物料清單中文版。
बिबरन करके दिए गये वस्तुओं की सूची को देखें RecycleBC.ca/what-can-i-recycle.
번역된 자료 목록은 RecycleBC.ca/what-can-i-recycle 에서 찾으십시오.
لطفاً فهرست مواد را به تفصیل در RecycleBC.ca/what-can-i-recycle مشاهده کنید.

ENSURE MORE MATERIALS ARE RECYCLED AND KEPT OUT OF LANDFILL BY REMEMBERING THESE PRO-TIPS:

- 1 Line it up.** Put your cardboard between your boxes, not on top. Leave about 1m (3 feet) of space between recycling boxes and your garbage/organics bins.
- 2 Keep it clean.** Empty and rinse containers to prevent contamination, recycle more materials, and avoid attracting wildlife when you put them out for collection.
- 3 Flatten and cut.** If your cardboard is too big for the blue box, flatten and cut it into smaller pieces, no larger than 76 cm x 76 cm (30 in x 30 in). Stack them loosely between your boxes. Don't forget to keep flexible plastics out of your recycling!
- 4 Avoid litter.** Don't overfill your recycling boxes. If you can't fit everything comfortably, contact Recycle BC's collection partner for an additional box or use a similar open box (like a laundry basket or storage box) to sort your material properly.
- 5 We're here to help.** Download our app, email us at info@recyclebc.ca or reach out on social media @RecycleBC.



OOPS! Did you receive an Oops tag on collection day?

Our collection partners may leave these behind if your material is unable to be collected. The tag will indicate the issue.

GFL Environmental is Recycle BC's curbside collection partner in the Boundary Region of the Regional District of Kootenay Boundary. They can answer questions about collection zones, missed pick-ups, holiday schedules, or recycling blue boxes.

Contact: GFL Environmental
Phone: 1-888-791-1190
Email: csrtrail@gflenv.com

For information about garbage, compost, or yard and garden waste services in the Regional District of Kootenay Boundary, please contact your local government.

NEARBY DEPOTS

Christina Lake Transfer Station
834 Cascade Dump Rd., Christina Lake
(Hwy 395, 3 kms south of Hwy 3)
250-447-7647

Grand Forks Recycling Depot
8058 Donaldson Drive, Grand Forks
250-442-2523

Rock Creek Transfer Station
1610 Rock Creek Dump Rd, Rock Creek
250-446-2231

West Boundary Landfill
2050 Motherlode Rd, Greenwood
3 km up Deadwood Rd from Hwy 3
250-442-2734

ABOUT RECYCLE BC

Recycle BC is a not-for-profit organization responsible for residential packaging and paper product recycling throughout BC, servicing over 2 million households. Recycle BC ensures your household materials are picked up, sorted, and responsibly managed and recycled. Our program is funded by 1,200 businesses that include retailers, manufacturers and restaurants that supply packaging and paper to BC residents, shifting costs away from homeowners.

For more information visit:

RecycleBC.ca

@RecycleBC



RECYCLEBC

Making a difference together.

2025-2026 RECYCLING SCHEDULE

Kootenay Boundary (BOUNDARY REGION)



RecycleBC.ca/Boundary

PAPER

PUT INTO ONE BLUE BOX

Cut excess cardboard to 76 cm x 76 cm (30 in x 30 in) and stack beside box
Clean and dry paper only



CONTAINERS

PUT INTO ONE BLUE BOX

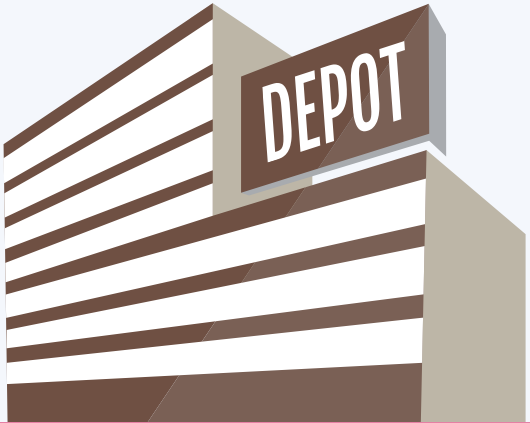
Empty and rinse containers



DROP-OFF ONLY

TAKE TO RECYCLING DEPOT

Not accepted in your blue boxes



WE CAN MAKE A DIFFERENCE
RECYCLE RIGHT

Recycle BC serves 196 communities across BC, and every single one has the power to make a difference—including yours!
Because when we sort properly, rinse our containers, or head to the depot, we're making a huge play for Team BC.
And that kind of effort is contagious.



Learn more
at RecycleBC.ca

FLIP FOR
INSTANT
INFO

Newspapers, inserts, flyers

Magazines, catalogues, phone books

Boxboard boxes

Moulded paper

Household paper

Paper bags and boxes

Paper decorations

Shredded paper (contain in paper bag or box first)

Cardboard boxes

- ✓ Greeting cards
- ✓ Paper gift wrap
- ✓ Paper gift bags
- ✓ Paper carry-out beverage trays
- ✓ Cores from paper towel and toilet tissue
- ✓ Compressed paper hangers
- ✓ Paper-only shipping envelopes

NOT ACCEPTED

Hard and soft cover books

Flexible plastics

Clothing and textiles

Food, yard waste and wood

- ✗ Non-paper gift wrap, foil wrap, cards or paper with glitter
- ✗ Rubber bands, ribbons, and bows
- ✗ Paper envelopes with plastic lining
- ✗ Bubble wrap lined paper envelopes, plastic padded envelopes, etc.
- ✗ Bags and boxes with foil liners
- ✗ Paper towels, napkins and tissues
- ✗ Foil or plastic lined paper bags

Plastic bottles, jars and jugs

Plastic trays and containers

Plastic garden pots and seedling trays

Caps, tops, lids and pumps

Plastic or paper cups, plates, bowls and lids

Cartons for soup, cream, etc.

Metal cans

Spray containers (empty)

Foil wrap and containers

- ✓ Plastic packaging for toys, toothbrushes, etc. Separate plastic from paper backing
- ✓ Spiral wound cans and lids for frozen juice concentrate, chips, etc.
- ✓ Plastic pails less than 25L for laundry detergent, cat litter, etc.
- ✓ Plastic tubs for yogurt, margarine, etc.

NOT ACCEPTED

Flexible plastics

Hazardous waste

Glass

Electronics and appliances

Durable products

Metal hangers, pots, pans and other scrap metal

- ✗ Foam packaging
- ✗ Chip bags and candy wrappers
- ✗ Stand-up pouches
- ✗ Packaging labeled biodegradable or compostable
- ✗ Wiring, metal cords, and hardware
- ✗ Clothing, textiles and shoes
- ✗ Food and yard waste

GLASS

Glass bottles - clear and coloured

Glass jars - clear and coloured

! Put all lids in blue box.

NOT ACCEPTED

- ✗ Drinking glasses, dishes, or cookware
- ✗ Window glass or mirrors
- ✗ Ceramic products
- ✗ Light bulbs or light fixtures

Want to recycle something not included here?

Search Recycle BC's Waste Wizard or download a full material list at RecycleBC.ca.
To recycle items that are not packaging, packaging-like products, single-use items, or paper, contact the Recycling Council of BC (RCBC) at RCBC.ca.

Unused Medication

Empty medication containers can be recycled with Recycle BC, but unused or expired medications can be safely disposed by returning them to community pharmacies. For more information or to find the nearest pharmacy, please visit www.healthsteward.ca.

NO HAZARDOUS MATERIALS

- ✗ Batteries
- ✗ Medical sharps
- ✗ Bleach or aerosol containers with any contents remaining
- ✗ Containers with the words COMBUSTIBLE, FLAMMABLE or VERY FLAMMABLE on them (except cosmetic and beauty product containers)
- ✗ Compressed gas cylinders, for example used propane cylinders
- ✗ Containers for paint, motor oil, vehicle lubricants, or antifreeze
- ✗ Containers for pesticides labelled POISON, and precautionary octagon or diamond symbols with skull and cross bones

FLEXIBLE PLASTICS

Plastic bags

Outer bags and overwraps

Flexible packaging with plastic seal

Zipper-lock and stand-up pouches

Crinkly wrappers and bags

Protective and squishy cushion packaging

Woven plastic bags

- ✓ Bags for groceries, produce, and newspapers
- ✓ Overwrap for diapers, feminine hygiene products, paper towels, and soft drink flats

FOAM PACKAGING

Foam meat trays (remove absorbent pad)

Foam containers and cups

Foam cushion packaging used to protect electronics, etc.

NOT ACCEPTED

- ✗ Cellophane wrap for floral arrangements, etc.
- ✗ Garbage bags
- ✗ Plastic squeeze tubes
- ✗ Plastic-lined paper
- ✗ Paper-lined plastic
- ✗ Plastic strapping
- ✗ 6-pack rings
- ✗ Biodegradable plastic
- ✗ Vinyl
- ✗ Blue or pink foam insulation, packing chips and peanuts
- ✗ Squishy or flexible foam, and foam noodles