



A #BETTERBC STARTS WITH ALL OF US.

Team BC keeps about 200,000 tonnes of packaging and paper out of landfills and the environment every year. But it isn't time for a victory lap yet, because we still have a lot of work to do together.

To win the fight against waste, we need to make sure that we are recycling more and recycling right. Let's show em' what we can do!

PLASTIC PACKAGING

Did you know? 94% of BC residents think we should reduce and recycle plastic packaging, but only 43% of plastics are actually set out for collection or taken to a depot. Let's turn our good intentions into action!

You can make a difference by joining in - put hard plastic packaging in your blue box and take flexible plastics (like plastic bags, zipper-lock pouches and crinkly wrappers and bags) to a depot or London Drugs store.

More and more BC residents are taking their flexible plastics and foam packaging to depots instead of letting them end up in landfills, our communities or nature.

You can join in and make a difference by bringing these items to a depot or London Drugs store near you. If everyone in BC brought their flexible plastics to the depot we would collect and recycle 389 full-sized swimming pools full of flexible plastics, keeping it out of the landfill. Think of the impact we can have.

METAL AND FOIL

Did you know that metal and foil packaging can be recycled? Even the aluminum foil from your casserole or turkey dinner can be recycled.

Give it a rinse to get off most of the food residue and recycle it in your blue box!

Did you know that Recycle BC is recycling 94% of all materials that are received? But this only works if we set materials out for collection or return them to the depot. Think of the impact we can all have together.

Use the Recycle BC app to learn what you can recycle and where.

RECYCLING COLLECTION SCHEDULE

Place paper, containers and glass recycling at curb by



8:00 am

FEBRUARY 2026

SUN	MON	TUE	WED	THU	FRI	SAT
1	2	3	4	5	6	7
8	9	10	11	12	13	14
15	16	17	18	19	20	21
22	23	24	25	26	27	28

OCTOBER 2025

SUN	MON	TUE	WED	THU	FRI	SAT
			1	2	3	4
5	6	7	8	9	10	11
12	13	14	15	16	17	18
19	20	21	22	23	24	25
26	27	28	29	30	31	

MARCH 2026

SUN	MON	TUE	WED	THU	FRI	SAT
1	2	3	4	5	6	7
8	9	10	11	12	13	14
15	16	17	18	19	20	21
22	23	24	25	26	27	28
29	30	31				

NOVEMBER 2025

SUN	MON	TUE	WED	THU	FRI	SAT
						1
2	3	4	5	6	7	8
9	10	11	12	13	14	15
16	17	18	19	20	21	22
23	24	25	26	27	28	29

APRIL 2026

SUN	MON	TUE	WED	THU	FRI	SAT
			1	2	3	4
5	6	7	8	9	10	11
12	13	14	15	16	17	18
19	20	21	22	23	24	25
26	27	28	29	30		

DECEMBER 2025

SUN	MON	TUE	WED	THU	FRI	SAT
	1	2	3	4	5	6
7	8	9	10	11	12	13
14	15	16	17	18	19	20
21	22	23	24	25	26	27
28	29	30	31			

MAY 2026

SUN	MON	TUE	WED	THU	FRI	SAT
					1	2
3	4	5	6	7	8	9
10	11	12	13	14	15	16
17	18	19	20	21	22	23
24	25	26	27	28	29	30

JANUARY 2026

SUN	MON	TUE	WED	THU	FRI	SAT
					1	2
3	4	5	6	7	8	9
10	11	12	13	14	15	16
17	18	19	20	21	22	23
24	25	26	27	28	29	30

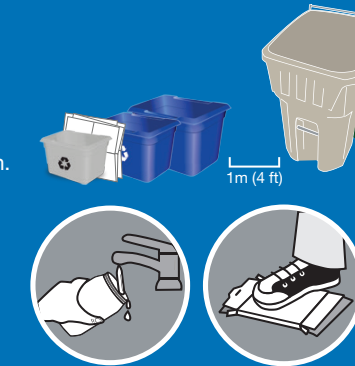
JUNE 2026

SUN	MON	TUE	WED	THU	FRI	SAT
	1	2	3	4	5	6
7	8	9	10	11	12	13
14	15	16	17	18	19	20
21	22	23	24	25	26	27
28	29	30				

October 2025 - June 2026

ENSURE MORE MATERIALS ARE RECYCLED AND KEPT OUT OF LANDFILL BY REMEMBERING THESE PRO-TIPS:

- 1 Line it up.** Put your cardboard between your boxes, not on top. Leave about 1m (3 feet) of space between recycling boxes and your garbage/organic carts.
- 2 Keep it clean.** Empty and rinse containers to prevent contamination, recycle more materials, and avoid attracting wildlife when you put them out for collection.
- 3 Flatten and cut.** If your cardboard is too big for the blue box, flatten and cut it into smaller pieces, no larger than 76 cm x 76 cm (30 in x 30 in). Stack them loosely between your boxes. Don't forget to keep flexible plastics out of your recycling!
- 4 Avoid litter.** Don't overfill your recycling boxes. If you can't fit everything comfortably, contact Recycle BC's collection partner for an additional box or use a similar open box (like a laundry basket or storage box) to sort your material properly.
- 5 We're here to help.** Download our app, email us at info@recyclebc.ca or reach out on social media @RecycleBC.



RECYCLEBC™

Making a difference together.

DOWNLOAD THE APP

SIGN UP FOR RECYCLING REMINDERS

SEARCH THE MATERIAL LIST

2025-2026 RECYCLING SCHEDULE

Quesnel Area

OOPS! Did you receive an Oops tag on collection day?

Our collection partners may leave these behind if your material is unable to be collected. The tag will indicate the issue.

Emterra Environmental is Recycle BC's curbside collection partner in the Quesnel area. They can answer questions about collection zones, missed pick-ups, holiday schedules, or recycling boxes.

Contact: Emterra Environmental
Phone: 250-992-2626
Email: askmebc2@emterra.ca

NEARBY DEPOT

Quesnel Landfill
980 Carson Pit Road, Quesnel
250-991-2749

Baker Creek Transfer Station
4831 Nazko Rd, Quesnel
250-392-3351

ABOUT RECYCLE BC

Recycle BC is a not-for-profit organization responsible for residential packaging and paper product recycling throughout BC, servicing over 2 million households. Recycle BC ensures your household materials are picked up, sorted, and responsibly managed and recycled. Our program is funded by 1,200 businesses that include retailers, manufacturers and restaurants that supply packaging and paper to BC residents, shifting costs away from homeowners.

For more information visit:

[RecycleBC.ca](https://www.recyclebc.ca)

[Facebook](https://www.facebook.com/RecycleBC) [Instagram](https://www.instagram.com/RecycleBC) [Twitter](https://www.twitter.com/RecycleBC) @RecycleBC



RECYCLED
Paper made from
recycled material
FSC® C136079

Download the App

View your collection schedule, sign up for recycling reminders, see depot locations, and search materials with the Recycle BC app.



[RecycleBC.ca/App](https://www.recyclebc.ca/app)

Please find a detailed material list at [RecycleBC.ca/what-can-i-recycle](https://www.recyclebc.ca/what-can-i-recycle).

請瀏覽 [RecycleBC.ca/what-can-i-recycle](https://www.recyclebc.ca/what-can-i-recycle) 查詢物料清單中文版。

ਕਿਰਪਾ ਕਰਕੇ ਇਹ ਅਨੁਵਾਦਿਤ ਸਮੱਗਰੀ ਸੂਚੀ ਨੂੰ ਇਥੇ ਦੇਖੋ [RecycleBC.ca/what-can-i-recycle](https://www.recyclebc.ca/what-can-i-recycle).

번역 된 자료 목록은 [RecycleBC.ca/what-can-i-recycle](https://www.recyclebc.ca/what-can-i-recycle) 에서 찾으십시오.

لطفاً فهرست مواد را به تفصیل در [RecycleBC.ca/what-can-i-recycle](https://www.recyclebc.ca/what-can-i-recycle) مشاهده کنید.

COLLECTION MAP

WEEK 1

- TUESDAY
- WEDNESDAY
- THURSDAY
- FRIDAY

WEEK 2

- TUESDAY
- WEDNESDAY
- NO COLLECTION

Recycling Collection Questions?

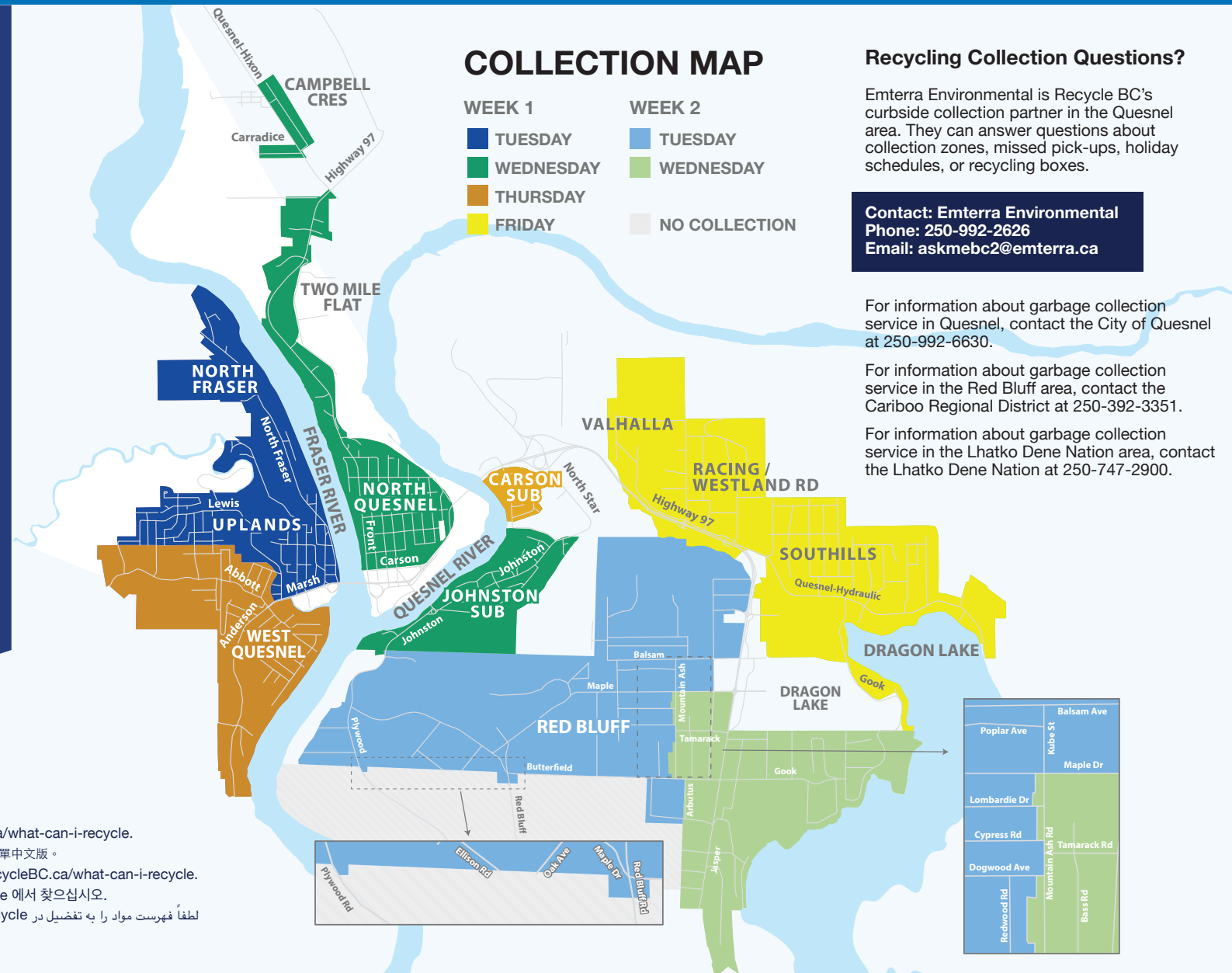
Emterra Environmental is Recycle BC's curbside collection partner in the Quesnel area. They can answer questions about collection zones, missed pick-ups, holiday schedules, or recycling boxes.

Contact: Emterra Environmental
Phone: 250-992-2626
Email: askmebc2@emterra.ca

For information about garbage collection service in Quesnel, contact the City of Quesnel at 250-992-6630.

For information about garbage collection service in the Red Bluff area, contact the Cariboo Regional District at 250-392-3351.

For information about garbage collection service in the Lhatko Dene Nation area, contact the Lhatko Dene Nation at 250-747-2900.



PAPER

PUT INTO ONE BLUE BOX

Cut excess cardboard to 76 cm x 76 cm (30 in x 30 in) and stack beside box
Clean and dry paper only



CONTAINERS

PUT INTO ONE BLUE BOX

Empty and rinse containers



GLASS

PUT INTO GREY BOX

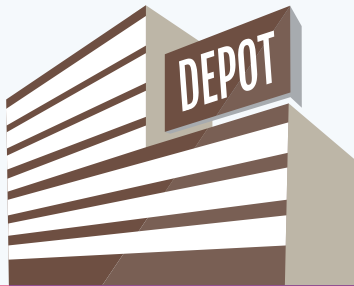
Empty and rinse glass bottles and jars



DROP-OFF ONLY

TAKE TO RECYCLING DEPOT

Not accepted in your blue boxes or grey box



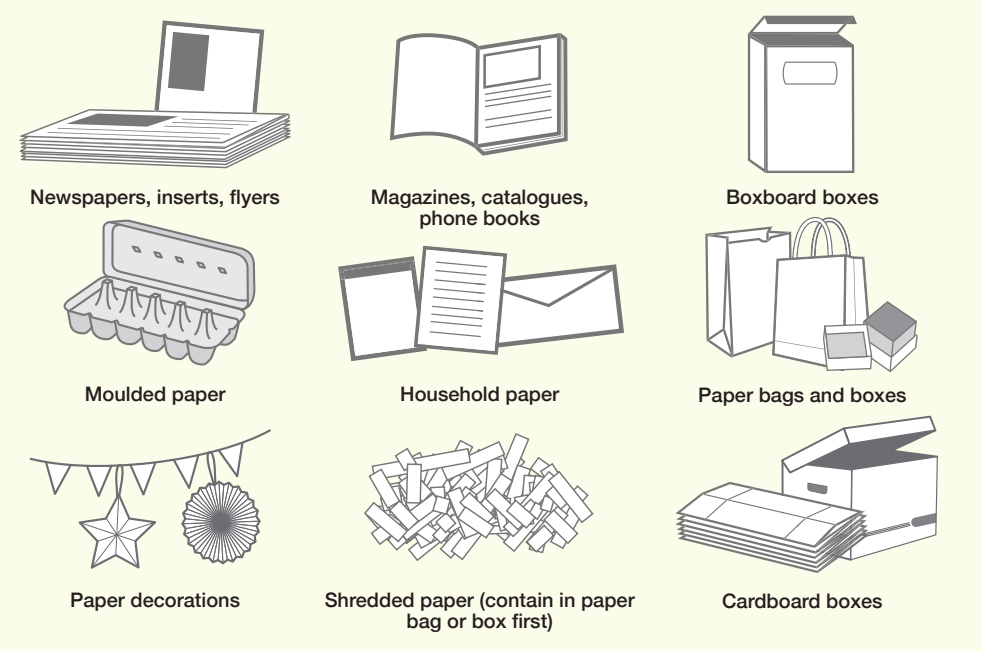
WE CAN MAKE A DIFFERENCE
RECYCLE RIGHT

Recycle BC serves 196 communities across BC, and every single one has the power to make a difference—including yours!
Because when we sort properly, rinse our containers, or head to the depot, we're making a huge play for Team BC.
And that kind of effort is contagious.



Learn more
at RecycleBC.ca

FLIP FOR
INSTANT
INFO



- ✓ Greeting cards
- ✓ Paper gift wrap
- ✓ Paper gift bags
- ✓ Paper carry-out beverage trays
- ✓ Cores from paper towel and toilet tissue
- ✓ Compressed paper hangers
- ✓ Paper-only shipping envelopes

NOT ACCEPTED



- ✗ Non-paper gift wrap, foil wrap, cards or paper with glitter
- ✗ Rubber bands, ribbons, and bows
- ✗ Paper envelopes with plastic lining
- ✗ Bubble wrap lined paper envelopes, plastic padded envelopes, etc.
- ✗ Bags and boxes with foil liners
- ✗ Paper towels, napkins and tissues
- ✗ Foil or plastic lined paper bags



- ✓ Plastic packaging for toys, toothbrushes, etc. Separate plastic from paper backing
- ✓ Spiral wound cans and lids for frozen juice concentrate, chips, etc.
- ✓ Plastic pails less than 25L for laundry detergent, cat litter, etc.
- ✓ Plastic tubs for yogurt, margarine, etc.

NOT ACCEPTED



- ✗ Foam packaging
- ✗ Chip bags and candy wrappers
- ✗ Stand-up pouches
- ✗ Packaging labeled biodegradable or compostable
- ✗ Wiring, metal cords, and hardware
- ✗ Clothing, textiles and shoes
- ✗ Food and yard waste



Put all lids in blue box.

NOT ACCEPTED

- ✗ Drinking glasses, dishes, or cookware
- ✗ Window glass or mirrors
- ✗ Ceramic products
- ✗ Light bulbs or light fixtures

Want to recycle something not included here?

Search Recycle BC's Waste Wizard or download a full material list at RecycleBC.ca.
To recycle items that are not packaging, packaging-like products, single-use items, or paper, contact the Recycling Council of BC (RCBC) at RCBC.ca.

Unused Medication

Empty medication containers can be recycled with Recycle BC, but unused or expired medications can be safely disposed by returning them to community pharmacies. For more information or to find the nearest pharmacy, please visit www.healthsteward.ca.

NO HAZARDOUS MATERIALS

- ✗ Batteries
- ✗ Medical sharps
- ✗ Bleach or aerosol containers with any contents remaining
- ✗ Containers with the words COMBUSTIBLE, FLAMMABLE or VERY FLAMMABLE on them (except cosmetic and beauty product containers)
- ✗ Compressed gas cylinders, for example used propane cylinders
- ✗ Containers for paint, motor oil, vehicle lubricants, or antifreeze
- ✗ Containers for pesticides labelled POISON, and precautionary octagon or diamond symbols with skull and cross bones



NOT ACCEPTED

- ✗ Cellophane wrap for floral arrangements, etc.
- ✗ Garbage bags
- ✗ Plastic squeeze tubes
- ✗ Plastic-lined paper
- ✗ Paper-lined plastic
- ✗ Plastic strapping
- ✗ 6-pack rings
- ✗ Biodegradable plastic
- ✗ Vinyl

- ✗ Blue or pink foam insulation, packing chips and peanuts
- ✗ Squishy or flexible foam, and foam noodles