

# RECYCLING GIVES MATERIALS A SECOND LIFE

By working together with residents and partners, our program is recycling materials as responsibly and locally as possible.


## PLASTICS

Plastics are processed in Metro Vancouver, creating pellets for new products like containers, pipes and planter pots.



## METALS

Metals are sold to end markets across North America and recycled into new packaging and sheet metal.




## GLASS

Most collected glass stays in BC and is processed into new bottles and jars, sandblast material and construction aggregate.



## PAPER


Much of the paper collected is sold to mills across North America and recycled into new products like cardboard boxes, paperboard packaging and tissue.




Learn more at [RecycleBC.ca/recycling-process](https://RecycleBC.ca/recycling-process)

## RECYCLING COLLECTION SCHEDULE

May 2026 - June 2027

Place blue-lidded cart (paper and containers), pink box (flexible plastics) and grey box (glass) at the curb by:  **7 a.m.** on collection day

MAY 2026							JUNE 2026							JULY 2026						
SUN	MON	TUE	WED	THU	FRI	SAT	SUN	MON	TUE	WED	THU	FRI	SAT	SUN	MON	TUE	WED	THU	FRI	SAT
					1	2	1	2	3	4	5	6	1	2	3	4				
3	4	5	6	7	8	9	7	8	9	10	11	12	13	5	6	7	8	9	10	11
10	11	12	13	14	15	16	14	15	16	17	18	19	20	12	13	14	15	16	17	18
17	18	19	20	21	22	23	21	22	23	24	25	26	27	19	20	21	22	23	24	25
24	25	26	27	28	29	30	28	29	30					26	27	28	29	30	31	

AUGUST 2026							SEPTEMBER 2026							OCTOBER 2026							
SUN	MON	TUE	WED	THU	FRI	SAT	SUN	MON	TUE	WED	THU	FRI	SAT	SUN	MON	TUE	WED	THU	FRI	SAT	
						1			1	2	3	4	5						1	2	3
2	3	4	5	6	7	8	6	7	8	9	10	11	12	4	5	6	7	8	9	10	
9	10	11	12	13	14	15	13	14	15	16	17	18	19	11	12	13	14	15	16	17	
16	17	18	19	20	21	22	20	21	22	23	24	25	26	18	19	20	21	22	23	24	
23	24	25	26	27	28	29	27	28	29	30				25	26	27	28	29	30	31	

NOVEMBER 2026							DECEMBER 2026							JANUARY 2027							
SUN	MON	TUE	WED	THU	FRI	SAT	SUN	MON	TUE	WED	THU	FRI	SAT	SUN	MON	TUE	WED	THU	FRI	SAT	
1	2	3	4	5	6	7			1	2	3	4	5						1	2	3
8	9	10	11	12	13	14	6	7	8	9	10	11	12	3	4	5	6	7	8	9	
15	16	17	18	19	20	21	13	14	15	16	17	18	19	10	11	12	13	14	15	16	
22	23	24	25	26	27	28	20	21	22	23	24	25	26	17	18	19	20	21	22	23	
29	30						27	28	29	30	31			24	25	26	27	28	29	30	

FEBRUARY 2027							MARCH 2027							APRIL 2027							
SUN	MON	TUE	WED	THU	FRI	SAT	SUN	MON	TUE	WED	THU	FRI	SAT	SUN	MON	TUE	WED	THU	FRI	SAT	
	1	2	3	4	5	6		1	2	3	4	5	6						1	2	3
7	8	9	10	11	12	13	7	8	9	10	11	12	13	4	5	6	7	8	9	10	
14	15	16	17	18	19	20	14	15	16	17	18	19	20	11	12	13	14	15	16	17	
21	22	23	24	25	26	27	21	22	23	24	25	26	27	18	19	20	21	22	23	24	
28							28	29	30	31				25	26	27	28	29	30		

MAY 2027							JUNE 2027						
SUN	MON	TUE	WED	THU	FRI	SAT	SUN	MON	TUE	WED	THU	FRI	SAT
						1			1	2	3	4	5
2	3	4	5	6	7	8	6	7	8	9	10	11	12
9	10	11	12	13	14	15	13	14	15	16	17	18	19
16	17	18	19	20	21	22	20	21	22	23	24	25	26
23	24	25	26	27	28	29	27	28	29	30			

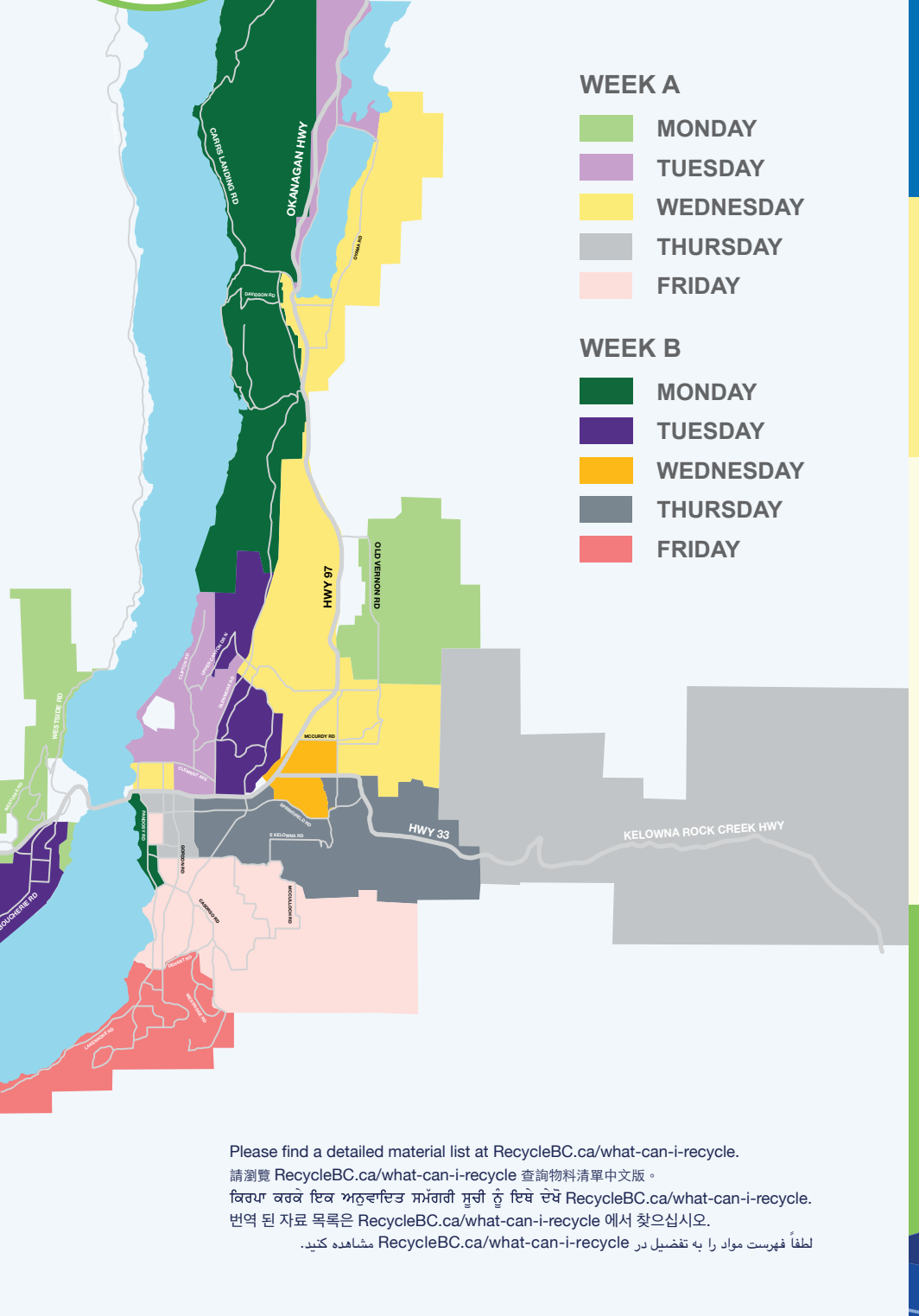
## COLLECTION MAP



### Download the app!

View your collection schedule, sign up for recycling reminders, see depot locations, and search materials using the Waste Wizard.

[RecycleBC.ca/App](https://RecycleBC.ca/App)



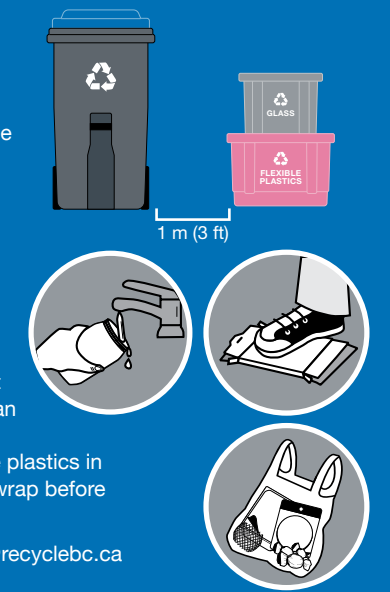
Please find a detailed material list at [RecycleBC.ca/what-can-i-recycle](https://RecycleBC.ca/what-can-i-recycle).  
 請瀏覽 [RecycleBC.ca/what-can-i-recycle](https://RecycleBC.ca/what-can-i-recycle) 查詢物料清單中文版。  
 किरण वरके दिव अन्वर्तित सभंगी सूची तूँ दिवें चर्चे [RecycleBC.ca/what-can-i-recycle](https://RecycleBC.ca/what-can-i-recycle).  
 번역 된 자료 목록은 [RecycleBC.ca/what-can-i-recycle](https://RecycleBC.ca/what-can-i-recycle) 에서 찾으십시오.  
 لطفاً فهرست مواد را به تقضیل در [RecycleBC.ca/what-can-i-recycle](https://RecycleBC.ca/what-can-i-recycle) مشاهده کنید.

Questions about recycling collection or about missing or damaged bins and boxes?  
 Environmental 360 Solutions  
 250-412-5336 | [RecycleBC@e360s.ca](mailto:RecycleBC@e360s.ca)

For information about other waste services, please contact Waste Reduction Services at 250-469-6250.

### Follow these guidelines to keep recyclable materials out of the landfill!

- Line it up.** Place your grey box on top of your pink box. Leave about 1 m (3 ft) of space between, and position the boxes to the right of your cart as viewed from the street.
- Keep it clean.** Empty and rinse containers to prevent contamination of recyclable materials and avoid attracting wildlife when you put them out for collection.
- Flatten and cut.** If your cardboard is too large for your blue lidded cart, flatten and cut it down into smaller pieces so it fits.
- Avoid litter.** Don't overfill your recycling. If you find that your grey or pink boxes are filling up too quickly, you can contact Recycle BC's collection partner (Environmental 360 Solutions) to request an additional box. Put flexible plastics in a clear bag (e.g. bread or produce bag), pouch or overwrap before placing them in the box.
- Connect with us.** Download our app, email us at [info@recyclebc.ca](mailto:info@recyclebc.ca) or reach out on social media @RecycleBC.



### ! OOPS! Did you receive an Oops tag on collection day?

Our collection partners may leave these behind if your material is unable to be collected. The tag will indicate the issue. Any questions regarding uncollected carts or boxes should be directed to: **Environmental 360 Solutions** at 250-412-5336 or [RecycleBC@e360s.ca](mailto:RecycleBC@e360s.ca)

### NEARBY DEPOTS

- Boucherie Self Storage & Bottle Depot**  
2711 Kyle Rd, West Kelowna  
250-769-7122
- Columbia Bottle Depot – Central**  
1936 Kent Rd, Kelowna  
250-763-2500
- Columbia Bottle Depot – Rutland**  
680 Dease Rd, Kelowna  
250-765-9115
- Columbia Bottle Depot – St Paul**  
1314 St. Paul St, Kelowna  
250-763-2554
- Planet Earth Recycling Ltd.**  
3-1400 Industrial Rd, West Kelowna  
250-768-0878
- London Drugs (all Kelowna / West Kelowna locations)**  
London Drugs accepts flexible plastics and foam packaging only. Due to space limitations, a maximum of one grocery bag of each material is suggested per visit.
- RDCO LOCATIONS:**
  - Glenmore Landfill Recycling Depot**  
2710 John Hindle Dr, Kelowna  
250-469-6250
  - Asquith Road Transfer Station**  
2640 Asquith Rd, West Kelowna  
250-469-6250

### ABOUT RECYCLE BC

Recycle BC is a not-for-profit organization responsible for residential packaging and paper product recycling throughout BC, servicing over 2 million households. Recycle BC ensures your household materials are picked up, sorted, and responsibly managed and recycled. Our program is funded by over 1,300 businesses that include retailers, manufacturers and restaurants that supply packaging and paper to BC residents, shifting costs away from homeowners.

For more information visit:  
[RecycleBC.ca](https://RecycleBC.ca)  @RecycleBC



### IS THIS GUIDE HELPFUL?

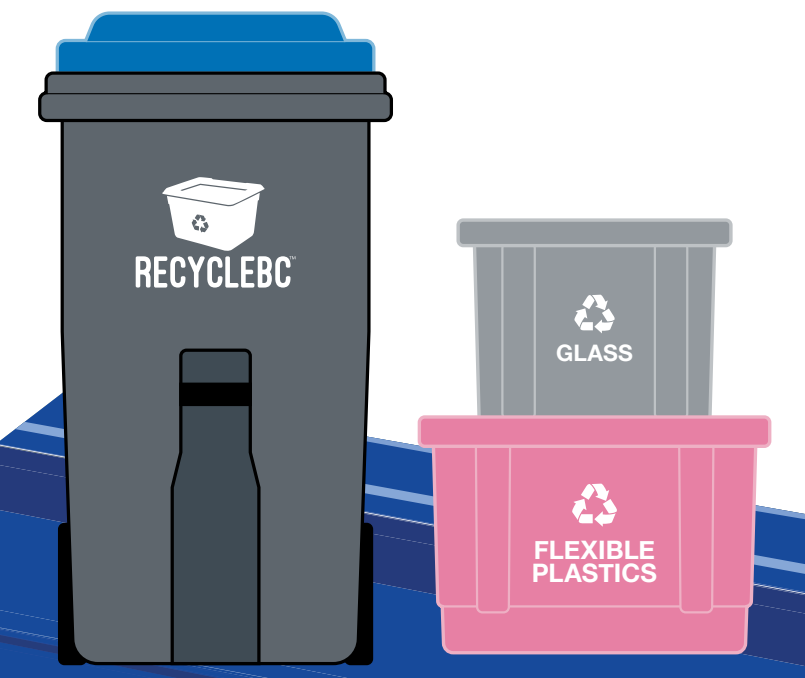


Scan the QR code to take a quick survey and share your feedback.



## 2026-2027 RECYCLING SCHEDULE

### Central Okanagan



[RecycleBC.ca/CentralOkanagan](https://RecycleBC.ca/CentralOkanagan)

# PAPER

## BLUE LIDDED CART

Clean and dry paper only  
Flatten cardboard and boxboard  
Cut excess cardboard into smaller pieces to fit inside your cart



# CONTAINERS

## BLUE LIDDED CART

Empty and rinse containers



# GLASS

## GREY BOX

Empty and rinse before recycling



NEW!

# FLEXIBLE PLASTICS

## PINK BOX

Put flexible plastics in a clear bag (e.g. bread or produce bag), pouch or overwrap before placing them in the box.

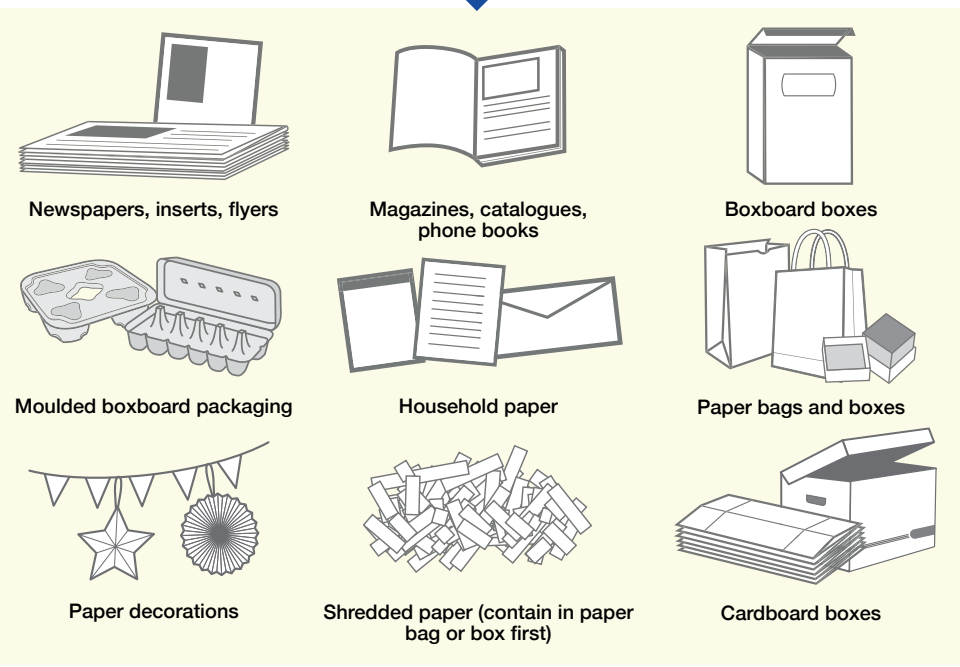
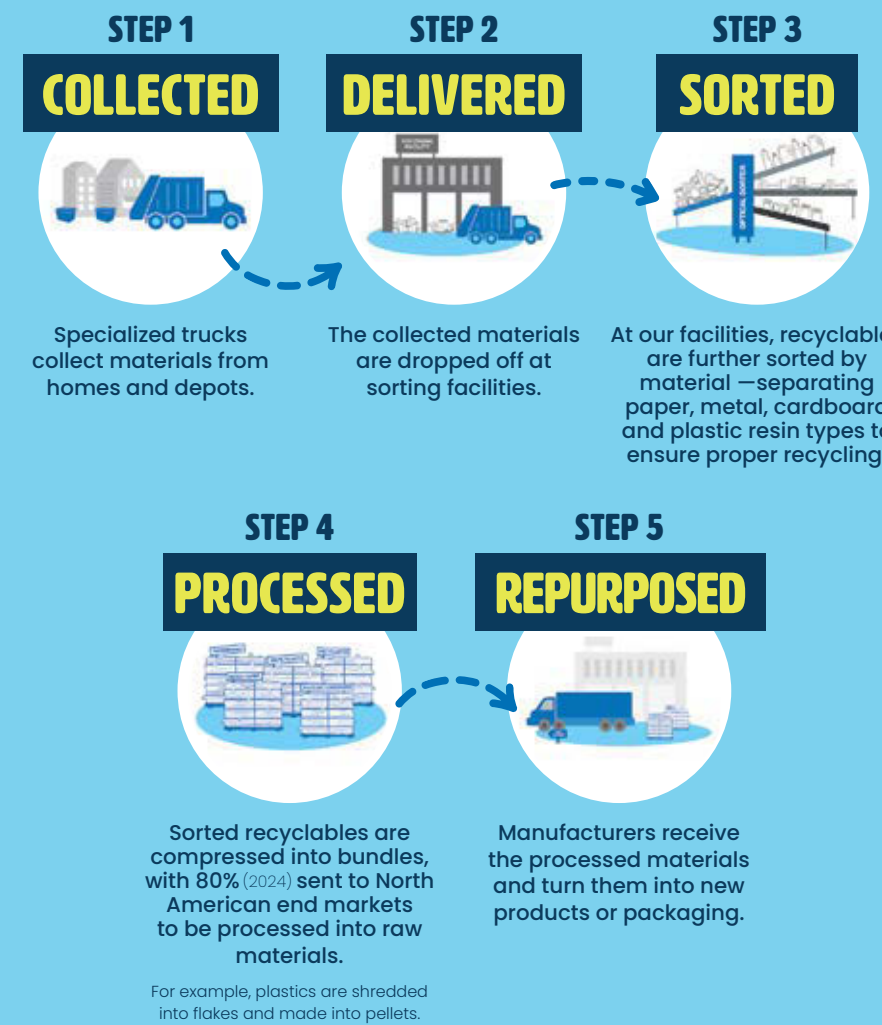


NEW!

# WHAT HAPPENS TO MY RECYCLING?



Recycling keeps valuable materials in use and out of landfills. Here's a simple look at what happens after you bring your recycling to the curb.



- ✓ Greeting cards
- ✓ Paper gift wrap
- ✓ Paper gift bags
- ✓ Cores from paper towel and toilet tissue
- ✓ Compressed paper hangers
- ✓ Paper-only shipping envelopes



- ✓ Plastic packaging for toys, toothbrushes, etc. (separate plastic from paper backing)
- ✓ Plastic pails less than 25L for laundry detergent, cat litter, etc.
- ✓ Spiral wound cans and lids for frozen juice concentrate, chips, etc.
- ✓ Plastic tubs for yogurt, margarine, etc.



Glass bottles and jars are now accepted for curbside collection!

Put all lids in blue lidded cart

## NOT ACCEPTED

- \* Drinking glasses, dishes, or cookware
- \* Ceramic products
- \* Window glass or mirrors
- \* Light bulbs or light fixtures
- \* Refillable beverage containers

Want to recycle something not included in curbside collection?

Search Recycle BC's Waste Wizard or download a full material list at [RecycleBC.ca](http://RecycleBC.ca). If the item you'd like to recycle is not accepted by Recycle BC, please contact the Recycling Council of BC at [RCBC.ca](http://RCBC.ca) for more information.

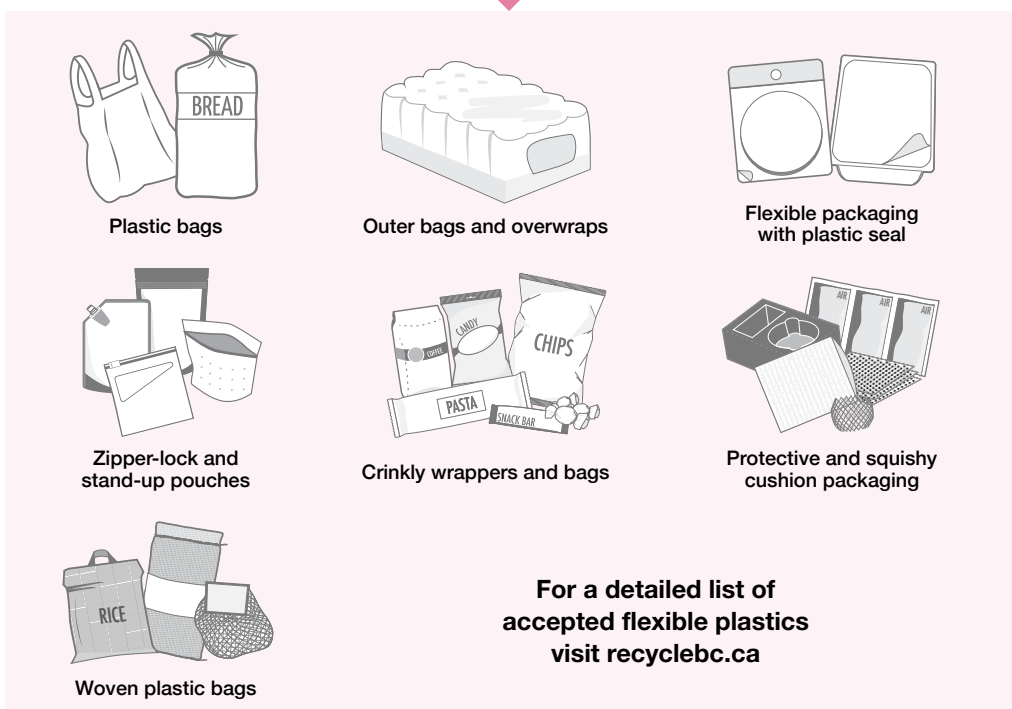
## Unused Medication

Empty medication containers (e.g. pills, capsules, liquid) are accepted by Recycle BC. Unused or expired medication and anything containing sharps can be safely disposed of by returning them to community pharmacies. For more information or to find the nearest pharmacy, please visit [www.healthsteward.ca](http://www.healthsteward.ca).

## NO HAZARDOUS MATERIALS

- \* Batteries
- \* Medical sharps
- \* Bleach or aerosol containers with any contents remaining
- \* Containers with the words COMBUSTIBLE, FLAMMABLE or VERY FLAMMABLE on them (except cosmetic and beauty product containers)
- \* Compressed gas cylinders (e.g. propane and helium tanks/cylinders)
- \* Containers for paint, motor oil, vehicle lubricants, or antifreeze
- \* Containers for pesticides labelled POISON, and precautionary octagon or diamond symbols with skull and cross bones
- \* Wiring, metal cords, and hardware
- \* Clothing, textiles and shoes
- \* Food and yard waste

To find out where to take hazardous materials, visit [RCBC.ca](http://RCBC.ca).



Flexible plastics are now accepted for curbside collection!

For a detailed list of accepted flexible plastics visit [recyclebc.ca](http://recyclebc.ca)

## NOT ACCEPTED

- \* Garbage bags
- \* Cellophane wrap for floral arrangements, etc.
- \* Paper-lined plastic, plastic strapping
- \* Plastic squeeze tubes, plastic-lined paper
- \* 6-pack rings, biodegradable plastic, vinyl!

## FOAM PACKAGING

Depot drop-off only  
Not accepted in your curbside recycling cart or boxes



## NOT ACCEPTED

- \* Blue or pink foam insulation, packing chips and peanuts
- \* Squishy or flexible foam, foam noodles

## NOT ACCEPTED



- \* Non-paper gift wrap, foil wrap, cards or paper with glitter
- \* Paper envelopes with plastic lining, bubble-wrap lining, or plastic padding
- \* Oversized cardboard and cardboard that has not been flattened
- \* Bags and boxes with foil liners
- \* Rubber bands, ribbons and bows
- \* Paper towels, napkins and tissues
- \* Foil or plastic lined paper bags

## NOT ACCEPTED



- \* Foam packaging
- \* Chip bags and candy wrappers
- \* Stand-up pouches
- \* Packaging labeled biodegradable or compostable
- \* Wiring, metal cords, and hardware
- \* Clothing, textiles and shoes
- \* Food and yard waste