

RECYCLING GIVES MATERIALS A SECOND LIFE

By working together with residents and partners, our program is recycling materials as responsibly and locally as possible.

PLASTICS

Plastics are processed in Metro Vancouver, creating pellets for new products like containers, pipes and planter pots.




METALS

Metals are sold to end markets across North America and recycled into new packaging and sheet metal.




GLASS

Most collected glass stays in BC and is processed into new bottles and jars, sandblast material and construction aggregate.



PAPER

Much of the paper collected is sold to mills across North America and recycled into new products like cardboard boxes, paperboard packaging and tissue.




Learn more at RecycleBC.ca/recycling-process



RECYCLING COLLECTION SCHEDULE

July 2026 - June 2027

Place paper, containers and glass recycling at curb by:



7 a.m. on collection day

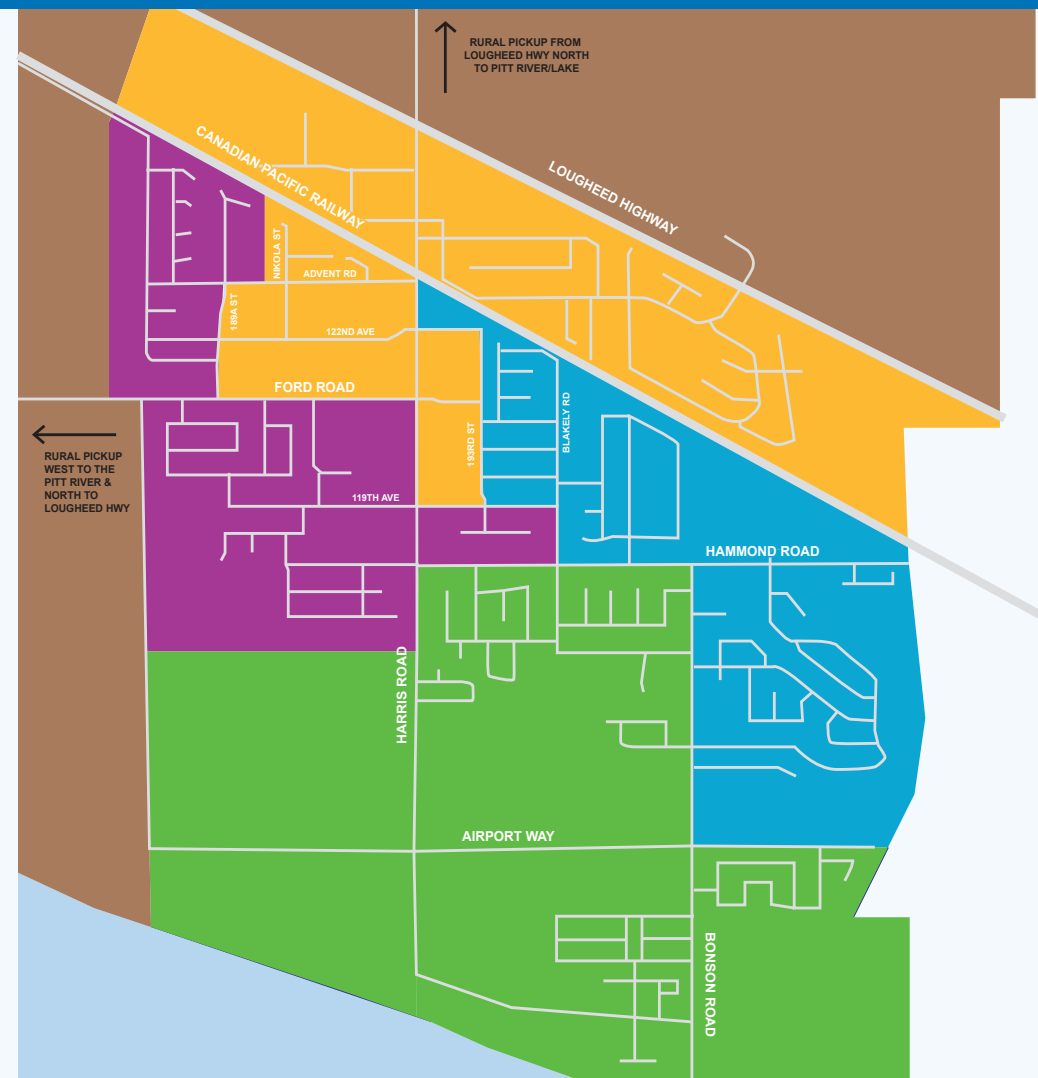
JULY 2026							AUGUST 2026							SEPTEMBER 2026							OCTOBER 2026						
SUN	MON	TUE	WED	THU	FRI	SAT	SUN	MON	TUE	WED	THU	FRI	SAT	SUN	MON	TUE	WED	THU	FRI	SAT	SUN	MON	TUE	WED	THU	FRI	SAT
			1	2	3	4	2	3	4	5	6	7	8	6	7	8	9	10	11	12	4	5	6	7	8	9	10
5	6	7	8	9	10	11	9	10	11	12	13	14	15	13	14	15	16	17	18	19	11	12	13	14	15	16	17
12	13	14	15	16	17	18	16	17	18	19	20	21	22	20	21	22	23	24	25	26	18	19	20	21	22	23	24
19	20	21	22	23	24	25	23	24	25	26	27	28	29	27	28	29	30				25	26	27	28	29	30	31
26	27	28	29	30	31																						

NOVEMBER 2026							DECEMBER 2026							JANUARY 2027							FEBRUARY 2027						
SUN	MON	TUE	WED	THU	FRI	SAT	SUN	MON	TUE	WED	THU	FRI	SAT	SUN	MON	TUE	WED	THU	FRI	SAT	SUN	MON	TUE	WED	THU	FRI	SAT
1	2	3	4	5	6	7	6	7	8	9	10	11	12	3	4	5	6	7	8	9	7	8	9	10	11	12	13
8	9	10	11	12	13	14	13	14	15	16	17	18	19	10	11	12	13	14	15	16	14	15	16	17	18	19	20
15	16	17	18	19	20	21	20	21	22	23	24	25	26	17	18	19	20	21	22	23	21	22	23	24	25	26	27
22	23	24	25	26	27	28	27	28	29	30	31			24	25	26	27	28	29	30	28						
29	30													30	31												

MARCH 2027							APRIL 2027							MAY 2027							JUNE 2027						
SUN	MON	TUE	WED	THU	FRI	SAT	SUN	MON	TUE	WED	THU	FRI	SAT	SUN	MON	TUE	WED	THU	FRI	SAT	SUN	MON	TUE	WED	THU	FRI	SAT
	1	2	3	4	5	6	4	5	6	7	8	9	10	2	3	4	5	6	7	8	6	7	8	9	10	11	12
7	8	9	10	11	12	13	11	12	13	14	15	16	17	9	10	11	12	13	14	15	13	14	15	16	17	18	19
14	15	16	17	18	19	20	18	19	20	21	22	23	24	16	17	18	19	20	21	22	20	21	22	23	24	25	26
21	22	23	24	25	26	27	25	26	27	28	29	30		23	24	25	26	27	28	29	27	28	29	30			
28	29	30	31											30	31												

COLLECTION MAP

- MONDAY
- TUESDAY
- WEDNESDAY
- THURSDAY
- FRIDAY



Questions about recycling collection or about missing or damaged boxes or bags?

GFL Environmental
604-282-7967
srrecycle@gflenv.com

For information about garbage or green bin collection services, please contact the City of Pitt Meadows at 604-465-5454.

Download the app!

View your collection schedule, sign up for recycling reminders, see depot locations, and search materials using the Waste Wizard.



RecycleBC.ca/App

Please find a detailed material list at RecycleBC.ca/what-can-i-recycle.
 請瀏覽 RecycleBC.ca/what-can-i-recycle
 查詢物料清單中文版。
 ਕਿਰਪਾ ਕਰਕੇ ਇਕ ਅਨੁਵਾਦਿਤ ਸਮੱਗਰੀ ਸੂਚੀ ਨੂੰ ਇਥੇ ਦੇਖੋ
RecycleBC.ca/what-can-i-recycle.
 번역된 자료 목록은 RecycleBC.ca/what-can-i-recycle
 에서 찾으십시오.
 لطفاً فهرست مواد را به تفصیل در
RecycleBC.ca/what-can-i-recycle مشاهده کنید.

Follow these guidelines to keep recyclable materials out of the landfill!

- Line it up.** Put your yellow bag between your boxes, not on top. Leave about 1 m (3 ft) of space between recycling boxes/bags and your garbage/organic carts.
- Keep it clean.** Empty and rinse containers to prevent contamination of recyclable materials and avoid attracting wildlife when you put them out for collection.
- Flatten and cut.** If your cardboard is too large for the yellow bag, flatten and cut it into smaller pieces, no larger than 76 cm x 76 cm (30 in x 30 in). Stack them loosely between your boxes and yellow bag.
- Avoid litter.** Don't overfill your recycling boxes. If you can't fit everything comfortably, contact Recycle BC's collection partner for an additional box or use a similar open box (like a laundry basket or storage box) to sort your material properly.
- Connect with us.** Download our app, email us at info@recyclebc.ca or reach out on social media @RecycleBC.



OOPS! Did you receive an Oops tag on collection day?

Our collection partners may leave these behind if your material is unable to be collected. The tag will indicate the issue. Any questions regarding uncollected boxes or bags should be directed to:

GFL Environmental at 604-282-7967 or srrecycle@gflenv.com

NEARBY DEPOTS

- London Drugs - Valley Fair Mall**
22709 Lougheed Hwy, Maple Ridge
604-448-4847
- Haney Bottle Depot**
#2 - 22935 Lougheed Highway, Maple Ridge
604-463-6233
- Maple Ridge Bottle Depot**
#15 - 20475 Lougheed Highway, Maple Ridge
604-465-8900
- Pitt Meadows Bottle & Return-It Depot**
19090 Lougheed Highway, Pitt Meadows
604-465-2866
- Maple Ridge Recycling Depot**
10092 236 Street, Maple Ridge
604-463-5545

ABOUT RECYCLE BC

Recycle BC is a not-for-profit organization responsible for residential packaging and paper product recycling throughout BC, servicing over 2 million households. Recycle BC ensures your household materials are picked up, sorted, and responsibly managed and recycled. Our program is funded by over 1,300 businesses that include retailers, manufacturers and restaurants that supply packaging and paper to BC residents, shifting costs away from homeowners.

For more information visit:
RecycleBC.ca @RecycleBC



IS THIS GUIDE HELPFUL?

Scan the QR code to take a quick survey and share your feedback.



RECYCLEBC™

Making a difference together.

2026-2027 RECYCLING SCHEDULE

Pitt Meadows



RecycleBC.ca/Pitt-Meadows

PAPER

YELLOW BAG

Clean and dry paper only
Cut excess cardboard to 76 cm x 76 cm (30 in x 30 in) and stack neatly between yellow bag and blue box



CONTAINERS

BLUE BOX

Empty and rinse containers



GLASS

GREY BOX

Glass bottles and jars only
Empty and rinse before placing in grey box



FLEXIBLE PLASTICS & FOAM PACKAGING

DEPOT DROP-OFF ONLY

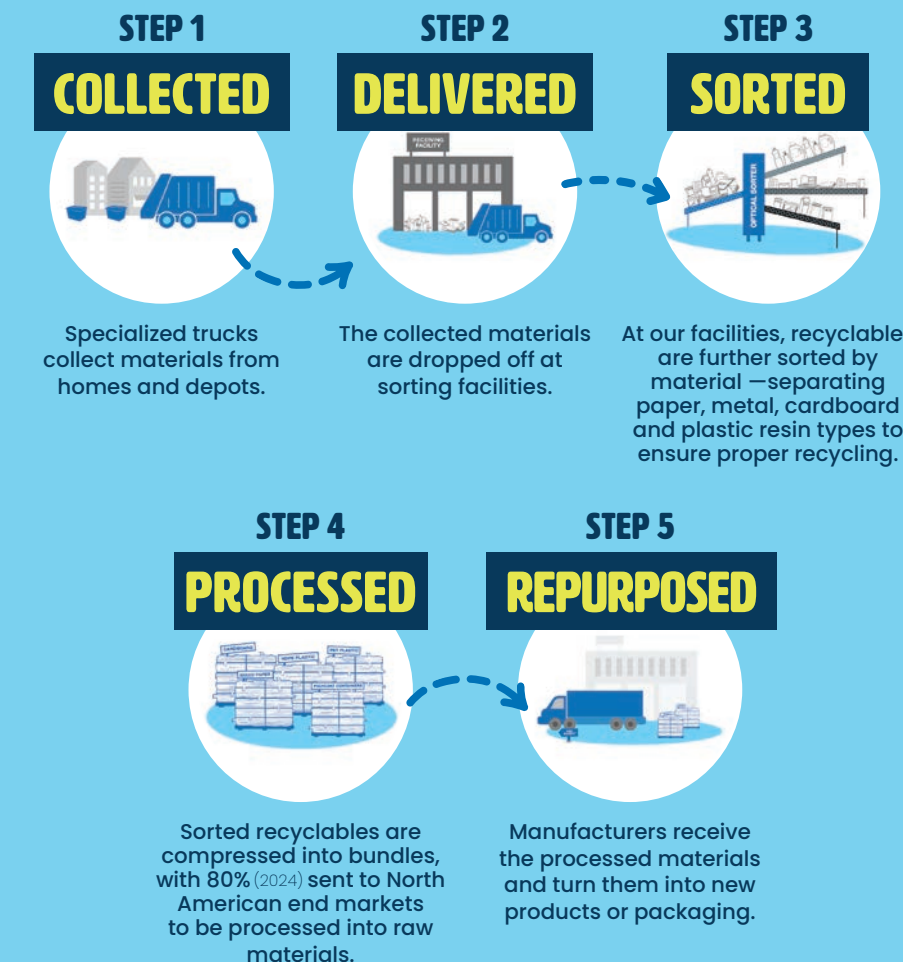
Not accepted in your yellow bag, blue box, or grey box



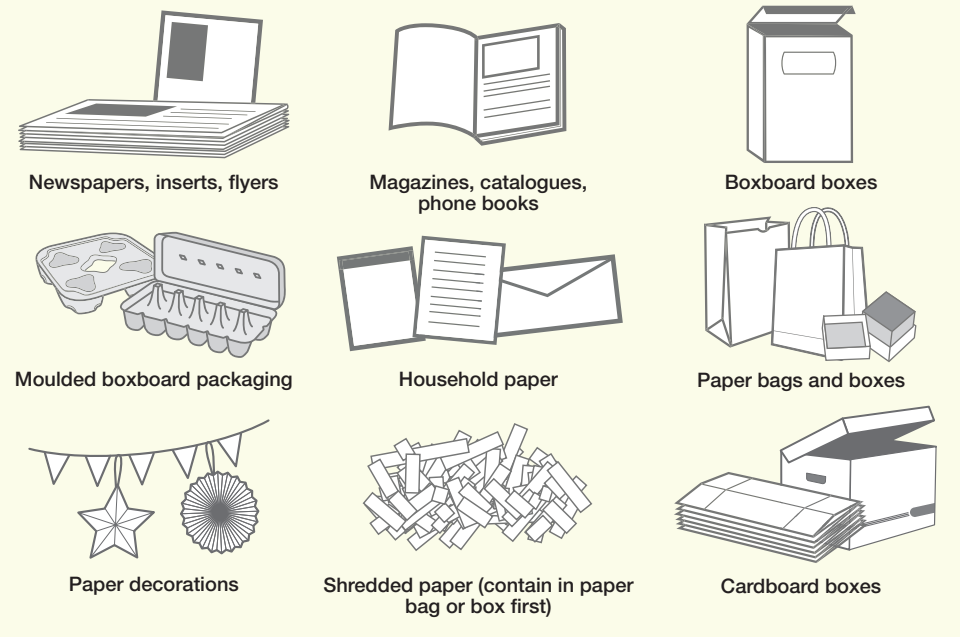
WHAT HAPPENS TO MY RECYCLING?



Recycling keeps valuable materials in use and out of landfills. Here's a simple look at what happens after you bring your recycling to the curb.



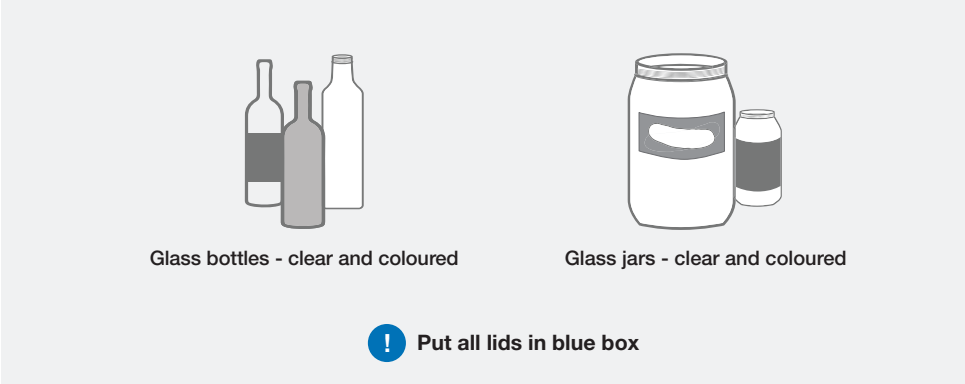
For example, plastics are shredded into flakes and made into pellets.



- ✓ Greeting cards
- ✓ Paper gift wrap
- ✓ Paper gift bags
- ✓ Cores from paper towel and toilet tissue
- ✓ Compressed paper hangers
- ✓ Paper-only shipping envelopes



- ✓ Plastic packaging for toys, toothbrushes, etc. (separate plastic from paper backing)
- ✓ Plastic pails less than 25 L for laundry detergent, cat litter, etc.
- ✓ Plastic tubs for yogurt, margarine, etc.
- ✓ Spiral wound cans and lids for frozen juice concentrate, chips, etc.



NOT ACCEPTED

- ✗ Drinking glasses, dishes, or cookware
- ✗ Window glass or mirrors
- ✗ Ceramic products
- ✗ Light bulbs or light fixtures
- ✗ Refillable beverage containers

Want to recycle something not included here?

Search Recycle BC's Waste Wizard or download a full material list at RecycleBC.ca. If the item you'd like to recycle is not accepted by Recycle BC, please contact the Recycling Council of BC at RCBC.ca for more information.

Unused Medication

Empty medication containers (e.g. pills, capsules, liquid) are accepted by Recycle BC. Unused or expired medication and anything containing sharps can be safely disposed by returning them to community pharmacies. For more information or to find the nearest pharmacy, please visit www.healthsteward.ca.

NO HAZARDOUS MATERIALS

- ✗ Batteries
- ✗ Medical sharps
- ✗ Bleach or aerosol containers with any contents remaining
- ✗ Containers with the words COMBUSTIBLE, FLAMMABLE or VERY FLAMMABLE on them (except cosmetic and beauty product containers)
- ✗ Compressed gas cylinders (e.g. propane and helium tanks/cylinders)
- ✗ Containers for paint, motor oil, vehicle lubricants, or antifreeze
- ✗ Containers for pesticides labelled POISON, and precautionary octagon or diamond symbols with skull and cross bones



NOT ACCEPTED

- ✗ Garbage bags
- ✗ Cellophane wrap for floral arrangements, etc.
- ✗ Plastic squeeze tubes
- ✗ Plastic-lined paper
- ✗ Paper-lined plastic
- ✗ Plastic strapping
- ✗ 6-pack rings
- ✗ Biodegradable plastic
- ✗ Vinyl
- ✗ Blue or pink foam insulation, packing chips and peanuts
- ✗ Squishy or flexible foam, and foam noodles

NOT ACCEPTED



- ✗ Non-paper gift wrap, foil wrap, cards or paper with glitter
- ✗ Paper envelopes with plastic lining, bubble-wrap lining, or plastic padding
- ✗ Oversized cardboard and cardboard that has not been flattened
- ✗ Bags and boxes with foil liners
- ✗ Rubber bands, ribbons and bows
- ✗ Paper towels, napkins and tissues
- ✗ Foil or plastic lined paper bags

NOT ACCEPTED



- ✗ Foam packaging
- ✗ Chip bags and candy wrappers
- ✗ Stand-up pouches
- ✗ Packaging labeled biodegradable or compostable
- ✗ Wiring, metal cords, and hardware
- ✗ Clothing, textiles and shoes
- ✗ Food and yard waste